

# Mu State: Beta Alpha Banner

## Here's to Possibilities

### Possibilities for the Chapter

#### Literacy Project

Please remember to bring your storybooks to the December meeting. The first delivery of storybooks to the faculty and staff at Sunland Park Elementary School is scheduled for early next year.

#### World Fellowship Fund

With our basket raffles we will be striving to double our donation to the International World Fellowship Fund .



### Possibilities for Members

#### New Member Initiation

Beta Alpha will be initiating another group of key women educators in December.

#### Scholarships

Applications for scholarships are now available on the state and international websites.

#### Mu State Convention

State convention is scheduled next April in Orlando

#### Chapter Committees

We need a chair and members for the 2011 District V Initiation Breakfast Committee. A Pot Luck Planning meeting January 18, 2011 Please let Peg know if you want to serve..

### Beta Alpha Birthdays

December 2

Glenda Lubiner

December 10

Mary Cavaoli

December 20

Charlene Kushner

*Thank you Elaine for the beautiful hand-made cards*



## At- A-Glance 2010 & 2011 Programs

**December 16**

Holiday Party

*April 25-May 1  
State Convention*

**August 8**

New Member Tea

**January 29**

Mystery Murder  
Dinner & Meeting

**May 17**  
Bunco Party

Check the website  
for more details

Beta Alpha Chapter  
is also on Facebook

**March 19**

Birthday Luncheon  
Founder's Day  
Observation

*July 13-16  
SE Regional*

### Inside this issue:

Literacy Project	2
Recipes	2
Meet the Members	
Participate in Food Drive	3
Focus on the Arts	3
2nd Annual Craft Meeting	3
December Initiation	4
Toys for Tots	4

## Beta Alpha's Biennium Literacy Project

### OPENING DOORS

*"Read a Book & See the World"*

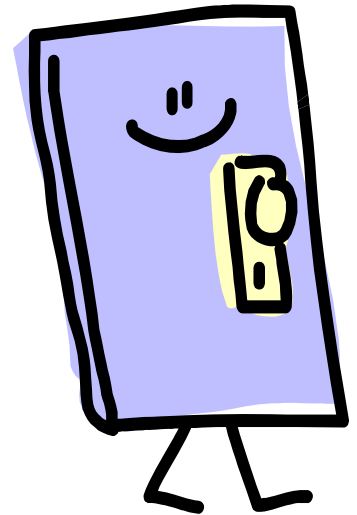
The Storybooks Project for Sunland Park Elementary School is underway. Beta Alpha members donated books at both the October and November meetings this year and we have two generous donations promised from members **Susan Kaplan Teller** and **Betty Bunnell**.

Susan and Betty **please fill free to bring your books to the December meeting** and Peg will store them until we

can schedule a delivery date.

Please remember to bring your books to the December meeting next month

Early in 2011 plans will be made to schedule the first deliver of storybooks to the faculty and staff at the school.



*"I have been impressed with the urgency of doing.*

*Knowing is not enough;*

*we must apply. Being*

*willing is not enough; we*

*must do."*

*Leonardo da Vinci*

## Members' Yummy Recipes

Elaine's Sugar Cream Cake

1 yellow cake mix  
4 eggs  
1 stick of margarine (melted)  
8oz package of cream cheese  
1lb box of powdered sugar  
nuts (optional)

Beat together cake mix, 2 eggs, and margarine and pour into a 9x12 greased and floured pan.

In a separate bowl beat together the cream cheese, 2 eggs and powdered sugar and pour it on top of the cake mix. Sprinkle on nuts (optional) Bake at 350 degrees for 30-40 minutes. After the cake cools sprinkle more powdered sugar on top of the cake. Enjoy

*Please send in your favorite recipes for this column to [pegdunnsnow@bellsouth.net](mailto:pegdunnsnow@bellsouth.net)*



## Meet the Members: Judy Zelinski

I am a native Floridian, born in Miami. I grew up in a scouting family. I was an active scout well into high school. Camping, canoeing, merit badge work filled my time. I attend reunion weekends once a year with scouting friends I knew 55 years ago, we still sing all those songs, craft and support each other through cancer and

life in general. My hobbies include stained glass, beading and rubber stamping. I was also honored this year by my peers as "The Teacher of the Year" at Walter C. Young Middle School.





## Gateway Food Bank

Once again members of Beta Alpha participated in the annual Thanksgiving Food Drive at the Gateway Food Pantry

At our meeting on Saturday, November 13 members brought can goods to be donated to the pantry in Deerfield Beach, Florida

For more information about Gateway Community Outreach and their Homeless Prevention and Food Program you may contact them at 701 NE 2nd Street Deerfield, FL 33441 954- 725-8434 [www.gatecommoutreach.com](http://www.gatecommoutreach.com)

A special thanks goes to Sally ( Finley) for delivering our donations this year.



## The Arts: A Major Focus of Delta Kappa Gamma

The Second Annual Beta Alpha Holiday Craft meeting was a huge success. Seven members spent a Saturday afternoon helping each other create beautiful Thanksgiving and

Christmas centerpieces while getting to know more about each other. We discovered we are also creative in the kitchen, as we sampled each others treats that afternoon. We decided

we should share some of our recipes with each other. See Elaine's recipe for a *Sugar Cream Cake* on page 2 of this issue of the newsletter & some of the centerpieces below .

IN RECENT YEARS  
THE ARTS HAVE  
BECOME A MAJOR  
FOCUS OF DELTA  
KAPPA GAMMA  
INTERNATIONAL  
SOCIETY OF KEY  
WOMEN  
EDUCATORS

## See All the Photos of the Centerpieces on the Website



## December Initiation

Beta Alpha members will be participating in a Chapter Initiation Ceremony during the December meeting next month. Our meeting will begin with the initiation of the following members **Myra Santos, Jeri Jo Florez, Betty Fagan , Arlene Colson, and Debbie Tirrell,**

We all look forward to officially welcoming these women to the chapter.

---

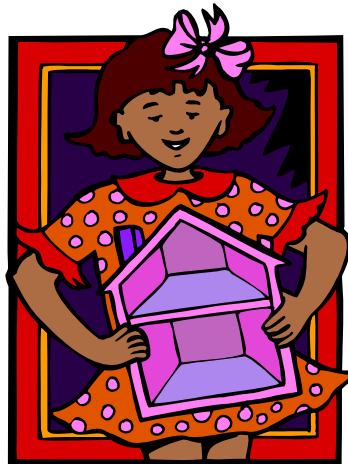
**We're on Facebook**

---



Yearbooks will be sent out with an update to the Chapter Directory right after the December meeting

## Annual Toys for Tots Community Service Project



We will also be having our annual Chinese Auction gift exchange at the December meeting.

If you would like to participate please bring a gift to exchange (\$15.00 to \$20.00)



Please remember to support our annual Toys for Tots Community Service Project this year and bring a **new**, unwrapped toy for a boy or girl between the ages of 3-12 to the December meeting this year.

( \$15.00 to \$20.00)

