



RAINBOW WAHINE VOLLEYBALL NEWS

Women's Volleyball Contacts: Pakalani Bello ▶ pakalani@hawaii.edu ▶ (808) 956-7506

2008 RAINBOW WAHINE SCHEDULE/RESULTS

Date Opponent Time/Result

Hawaiian Airlines Wahine Volleyball Classic

Aug. 29 NO. 1 PENN STATE L, 0-3
Aug. 30 OHIO W, 3-0
Aug. 31 NO. 6 UCLA L, 1-3

The Honolulu Advertiser Volleyball Challenge

Sept. 4 NO. 12 MINNESOTA W, 3-2
Sept. 5 WYOMING W, 3-0
Sept. 7 CINCINNATI W, 3-0

Chevron Rainbow Wahine Invitational

Sept. 11 ST. MARY'S W, 3-0
Sept. 12 PACIFIC W, 3-0
Sept. 13 NO. 9 WASHINGTON W, 3-2

Sept. 19 IDAHO* W, 3-1
Sept. 20 BOISE STATE* W, 3-0
Sept. 25 at Louisiana Tech* W, 3-0
Sept. 27 at New Mexico State* W, 3-0
Sept. 29 at San Jose State* W, 3-0
Oct. 10 LOUISIANA TECH* W, 3-0
Oct. 12 NEW MEXICO STATE* L, 0-3
Oct. 16 at Utah State* W, 3-0
Oct. 18 at Nevada* W, 3-0
Oct. 24 SAN JOSE STATE* W, 3-0
Oct. 26 FRESNO STATE* W, 3-1
Oct. 31 NEVADA* W, 3-0
Nov. 1 UTAH STATE* W, 3-0
Nov. 6 at Boise State* W, 3-0
Nov. 8 at Idaho* W, 3-0
Nov. 10 at Fresno State* W, 3-0
Nov. 15 Alumnae Match 5 p.m.
 UTAH VALLEY 7 p.m.

Nov. 20, 21, 23 WAC Tournament (Honolulu)

Nov. 26 CAL POLY 7 p.m.
Nov. 28 CAL POLY 7 p.m.

Dec. 4-6 NCAA First & Second Rounds TBA
Dec. 12-13 NCAA Regionals TBA
Dec. 18, 20 NCAA Championships TBA

* denotes WAC match rankings at time of match
ALL CAPS - home matches played at the Stan Sheriff Center
all times local to site

NO. 6 RAINBOW WAHINE FACE UTAH VALLEY BEFORE HOSTING WAC TOURNAMENT



Vs.



**NO. 6 HAWAII
RAINBOW WAHINE
(22-3)**

Stan Sheriff Center
Honolulu, O'ahu
Nov. 15 ▶ 7 p.m.

**UTAH VALLEY
WOLVERINES
(10-11)**

THIS WEEK'S SCHEDULE

Date	Opponent	Facility	Time
Nov. 15	Utah Valley	Stan Sheriff Center	7 p.m.

RADIO COVERAGE

ESPN 1420 (1420 AM) will broadcast the UH matches this week, live with **SCOTT ROBBS** handling the play-by-play. The matches can also be heard over the Internet on <http://espn1420am.com>.

LIVESTATS ON THE INTERNET

Livestats will be available through the UH Athletics website at HAWAIIATHLETICS.COM, on the women's volleyball home page.

TELEVISION COVERAGE

KFVE (Channel 5) will broadcast the match live on KFVE. **JIM LEAHEY** will do play-by-play for all matches, with **CHRIS MCLACHLIN** handling color commentary. The broadcasts can also be purchased online at <http://uhstreaming.oceanic.com>.

TICKET INFORMATION

Tickets for this week's matches are \$17 in the lower level, \$12 for adults (upper), \$10 for senior citizens (upper), \$5 for students ages 4-18 (upper), \$5 for super rooster UH students (lower) and \$3 for general UH students (upper). Tickets can be purchased at Stan Sheriff Center Box Office, the UH Campus Center, Rainbowtique Ward Center, the Aloha Stadium Box Office or OCET at Windward Community College, online at hawaiiathletics.com or by phone at (808) 944-2697.

AUTOGRAPH SESSION AFTER MATCH

The Rainbow Wahine will host an autograph and photo session following Saturday's match vs. Utah Valley. Players and coaches will be available on the course level to meet and greet the fans.

2008 RAINBOW WAHINE ROSTER

No.	Player	Pos.	Ht.	Yr.	Hometown (Last School)
1	Stephanie Ferrell	OH	6-1	R-Fr.	Los Angeles, CA (Locke HS)
2	Amber Kaufman	M	6-0	Jr.	San Jose, CA (Branham HS)
3	Tara Hittle	L/OH	6-0	Sr.	Colorado Springs, CO (Doherty HS)
4	Brittany Hewitt	M	6-3	Fr.	Eagle, ID (Eagle HS)
5	Kanani Danielson	OH	5-10	Fr.	Ewa Beach, O'ahu (Kamehameha Schools)
6	Jessica Keefe	OH	6-2	Sr.	Ames, IA (Ames HS)
7	Elizabeth Ka'aihue	L	5-8	So.	Kailua, O'ahu (Punahou HS)
8	Jamie Houston	OH	6-1	Sr.	Huntsville, AL (Huntsville HS)
9	Nickie Thomas	M	6-3	Sr.	Austin, TX (Westwood HS)
10	Stephanie Brandt	S	5-9	Jr.	Irvine, CA (UC Santa Barbara)
11	Dani Mafua	S	5-10	So.	Kapolei, O'ahu (Mid-Pacific Institute)
12	Emily Maeda	L	5-6	Fr.	Honolulu, O'ahu (Roosevelt HS)
13	Aneli Cubi-Otineru	OH	5-11	Jr.	Hale'iwa, O'ahu (College of Southern Idaho)
14	Amanda Simmons	M	6-2	So.	Des Plains, IL (Elk Grove HS)
15	Samantha Prather	L	5-10	Fr.	Playa Del Rey, CA (Bishop Montgomery)
16	Catherine Fowler	M	6-1	Jr.	Conway, AR (Arkansas)
18	Jayne Lee	L	5-2	Jr.	'Aiea, O'ahu (Hawai'i Baptist Academy)

Head Coach: Dave Shoji

Associate Coaches: Kari Ambrozich, Mike Sealy

Assistant Coach: Ryan Tsuji

BISON/AVCA DIVISION I COACHES TOP 25 (POLL #11 - NOV. 10)

Rk	School	Record	Ranking
1	<i>Penn State (60)</i>	26-0	1
2	Stanford	21-3	2
3	Nebraska	23-1	3
4	Texas	19-3	4
5	<i>Washington</i>	19-4	5
6	Hawai'i	21-3	7
7	California	20-4	6
8	Oregon	20-5	8
9	<i>UCLA</i>	16-8	9
10	Southern California	14-8	10
11	Wichita State	26-0	11
12	Florida	20-2	12
13	San Diego	19-3	14
14	Kansas State	21-5	15
15	<i>Minnesota</i>	20-6	17
16	Colorado State	20-3	13
17	Illinois	19-6	16
18	Purdue	20-6	18
19	Michigan	20-6	20
20	Saint Louis	22-4	21
21	Santa Clara	17-6	22
22	Kentucky	23-4	19
23	Utah	19-5	24
24	Pepperdine	17-5	23
25	Long Beach State	21-4	NR

Others receiving votes: *New Mexico State*; San Francisco; Tulane; *St. Mary's (Ca.)*; UAB; Iowa State; Arizona; Cincinnati; Tennessee; North Carolina; Middle Tennessee; Florida International; Rice

italics indicates 2008 UH opponent

STAT OF THE WEEK

The Rainbow Wahine finished its regular season road schedule this past week with a perfect 8-0 record. More impressive is that UH did not drop a set on the road the entire season, winning all 24 sets played away from the Stan Sheriff Center. It marks the first time in school history that Hawai'i has completed a road schedule without losing a set in the 35-year history of the program.

RAINBOW WAHINE CLINCH 13TH WAC TITLE

Hawai'i has been dominant in the Western Athletic Conference since joining the conference in 1996. This week, UH clinched at least a share of its 13th WAC title, winning it every year they've been in the conference. The Rainbow Wahine have an amazing 182-4 (.978) record in regular season conference matches.

Hawai'i also won their eighth-straight WAC tournament title last season, advancing to all 10 championship matches. In WAC Tournament play, Hawai'i is 28-2 (.933) with 18 sweeps, seven four-set wins and three five-set victories.

UH had an amazing streak of 114-consecutive wins in conference play that ran from Oct. 17, 1998 to Oct. 13, 2006, when UH fell to New Mexico State in five sets in Las Cruces, N.M. The streak spanned seven years and 361 days, beating 17 different teams. The loss occurred on the 58th road match during the streak, on the 29th different road trip that Hawai'i had taken.

Hawai'i also saw another impressive conference streak come to an end last season as Utah State snapped UH's 108-match home conference winning streak. That streak included a 97-match WAC home winning streak, with USU posting the first-ever win by a WAC team in Honolulu. New Mexico State became just the second WAC team to win in Honolulu earlier this season.

More impressive than the dominant record that UH has in conference is the fashion they have dominated in. Of the 182 wins, 140 of them have come in three-set sweeps. The Rainbow Wahine have won 31 WAC matches in four sets and just 11 in five sets. UH's loss to New Mexico State earlier this season was just the second time a WAC team has swept UH in their 13 years in the conference.

During the 15-point, serve-to-score era (1996-2000), Hawai'i had 15 sets in which they held their opponent to just two points, nine sets where they held them to one point and five conference sets in which they held the other team scoreless. In the 30-point, rally-scoring era (2001-2007), UH has had three sets in which they held the opposing team in single digits. Thus far this season, the first year with the 25-point, rally scoring, UH has held two teams under 10.

2008 WAC STANDINGS

Team	WAC Matches			All Matches		
	W	L	Pct.	W	L	Pct.
Hawai'i	15	1	.938	22	3	.880
New Mexico St.	13	1	.929	19	7	.731
Idaho	9	5	.643	16	9	.640
Utah St.	8	6	.571	10	15	.400
Nevada	6	8	.429	11	13	.458
San Jose St.	6	8	.429	11	15	.423
Boise St.	4	10	.286	8	17	.320
Fresno St.	3	11	.214	6	17	.261
Louisiana Tech	0	14	.000	4	21	.160

2008 WAC PRESEASON POLL

Rk.	Team	Points
1.	Hawai'i (8)	64
2.	New Mexico State (1)	57
3.	San Jose State	42
	Idaho	42
5.	Utah State	40
6.	Nevada	34
7.	Boise State	20
8.	Fresno State	16
9.	Louisiana Tech	9

PRESEASON ALL-WAC TEAM

Player	School
Krista Altermatt	New Mexico State
Lindsay Baldwin	Nevada
Colleen Burke	San Jose State
Niki Clement	San Jose State
Aneli Cubi-Otineru	Hawai'i
Chelsea Fowles	Utah State
Jamie Houston	Hawai'i
Amber Kaufman	Hawai'i
Haley Larsen	Idaho
Amber Simpson	New Mexico State
Krystal Torres	New Mexico State
Lindsey Yon	New Mexico State

Preseason Player of the Year:

Jamie Houston, Hawai'i

DANIELSON SHOWING ALL-AROUND SKILLS

Kanani Danielson has provided the team with great all-around number, hitting .298 with 2.98 kills, 3.12 digs and 0.43 blocks per set on the season.

Danielson played only in the back row for five matches due to injury. In matches where she played all the way around, the freshman is hitting .304 with 3.41 kills, 0.50 blocks and 3.29 digs per set.

The Ewa Beach, O'ahu, native had a great final road trip of the regular season. She started with nine kills and 18 digs at Boise State (Nov. 6), then hit .345 with 10 kills and 12 digs at Idaho (Nov. 8). She closed the trip by hitting .545 with six kills and eight digs at Fresno State (Nov. 10).

The freshman had six kills and nine digs vs. Nevada (Oct. 31), then posted seven kills and 12 digs vs. Utah State (Nov. 1).

The Kamehameha graduate hit .375 with 12 kills and seven digs vs. San Jose State (Oct. 24), then hit .310 with 13 kills and nine digs vs. Fresno State (Oct. 26).

Danielson hit .391 with 12 kills and three blocks at Utah State (Oct. 16), before posting nine kills and seven digs at Nevada (Oct. 18).

The Ewa Beach, O'ahu, native had a good start to WAC play, hitting .367 with 4.57 kills and 4.57 digs per set, earning the freshman WAC Player of the Week honors. Danielson hit .409 with 22 kills and 17 digs vs. Idaho (Sept. 19), before posting 10 kills and 15 digs vs. Boise State (Sept. 20).

Danielson was named to her second straight all-tournament team at the Chevron Rainbow Wahine Invitational, averaging 3.73 kills, 3.64 digs and 0.82 blocks per set. She hit .360 with 11 kills and 12 digs vs. St. Mary's (Sept. 11), then added nine kills and 12 digs vs. Pacific (Sept. 12) before posting 21 kills, 16 digs and four blocks vs. Washington (Sept. 13).

The freshman had an amazing week in The Honolulu Advertiser Challenge, hitting .429 with 4.10 kills and 3.10 digs per set to help her earn Most Outstanding Player honors, becoming the first UH freshman had earned MOP honors in any of the three hosted UH tournaments. She opened the tournament with 21 kills, 16 digs and a .369 hitting percentage vs. Minnesota (Sept. 4). Danielson then added seven kills and six digs while hitting .400 vs. Wyoming (Sept. 5) before hitting .571 with 13 kills, nine digs and two aces vs. Cincinnati (Sept. 7).

The Kamehameha graduate had her first career double-double with 14 kills and 18 digs vs. UCLA (Aug. 31) in the Wahine Classic, closing a weekend that saw her average 2.70 kills, 2.90 digs and 0.70 blocks per set.

UH RANKS IN TOP FIVE NATIONALLY IN ALL OFFENSIVE CATEGORIES

The Rainbow Wahine rank in the top five in the country in all three offensive categories in the Nov. 8 rankings. Their 14.04 assists and 15.00 kills per set averages rank third in the country with their .297 hitting percentage ranking fifth.

UH finished as the nation's leader in kills in 2002, while they led the country in assists in both 2001 and '02. The Rainbow Wahine have also finished the season with the nation's top hitting percentage in 2002 and with the most blocks per set in 1999.

Hawai'i is still the only team to lead the nation in all three offensive categories in one season, averaging 18.19 kills and 16.72 assists per set while hitting .329.

Individually, Dani Mafua ranks 13th in assists per set with 11.59. Amber Kaufman ranks 12th in aces per set (0.53) and 32nd in hitting percentage (.367), while Jamie Houston ranks 30th with a 4.05 kill per set average.

'BOWS IN THE POLLS

The Rainbow Wahine are ranked No. 6 in the AVCA Coaches Top 25 Poll this week. Hawai'i has enjoyed a successful run of 245-consecutive weeks in the poll, dating back to 1992, appearing in 375 of the 379 (.989) polls all-time. UH is third in poll appearances, behind only Nebraska and Stanford, who have both appeared in all 378 polls.

The Rainbow Wahine also rank third to Stanford and Nebraska in weeks ranked in the top 10 (285) and rank third to Nebraska and UCLA in weeks ranked at No. 1 (48). In its 48 weeks as the No. 1 team in the country, UH boasts a 126-10 (.923) record.

UH QUICK FACTS

Location:	Honolulu, HI
Enrollment::	20,357
Conference:	Western Athletic
Arena (cap.):	Stan Sheriff Center (10,300)
Head Coach:	Dave Shoji
Record at School (yrs.):	975-172-1 (34th)
Career Record (yrs.):	Same
Associate Coaches:	Kari Ambrozich, Mike Sealy
Trainer:	Rena Shigemura
Volleyball SID:	Pakalani Bello
Office Phone:	(808) 956-7506
Office FAX:	(808) 956-4470
E-mail:	pakalani@hawaii.edu
Courtside Phone:	(808) 956-9408

Rainbows on the Web

For more information about the volleyball team, visit the University of Hawai'i Athletic Department's new and improved website at:

HAWAIIATHLETICS.COM

Find stats, player bios and news about all the UH teams, along with new features including videos.

AVCA on the Web

The American Volleyball Coaches Association official website:

www.avca.org

offers information about collegiate women's volleyball including weekly polls, results, and statistics.

WAC Website

Visit the Western Athletic Conference website at www.wacsports.com

for the latest news regarding the leagues nine teams. Also check out stats, standings, notes, and other volleyball information.

Rainbow Wahine on the Air

The Rainbow Wahine have all of their home matches televised on KFVE (Channel 5) in Honolulu, except for a few matches that will be shown on pay-per-view. All matches (road matches included) are also available on radio on Sports Radio (1420 am). The radio broadcasts will also be streaming live over the Internet at

www.sportsradio1420.com

Media Policy on Medical Information

The University of Hawai'i Athletics Department will no longer disclose any medical information regarding student-athletes. This has been implemented to protect the privacy of the student-athletes in accordance with the Family Educational Rights and Privacy Act (FERPA) and the Health Insurance Portability and Accountability Act (HIPAA). Information on each student-athlete will be released as "probable," "questionable" or "doubtful."

HOUSTON NEARING 2,000-KILL MARK

Jamie Houston currently sits in second in the UH career kill list, racking up 1,920 kills in her career, also ranking third with a 4.83 kill per set career average.

The senior is hitting .258 on the season with 4.01 kills, 1.84 digs and 0.68 blocks per set.

The outside hitter played well on the road, hitting .556 with 11 kills and seven digs at Boise State (Nov. 6), to mark her fourth-straight match with double digit kills and at least a .500 hitting percentage. She also hit .438 with nine kills at Fresno State (Nov. 10).

Houston went off, hitting .607 with 19 kills and eight digs vs. Nevada (Oct. 31), then hitting .500 with 13 kills and seven digs vs. Utah State (Nov. 1).

The Huntsville, Ala., native posted two double-doubles, starting with 18 kills and 12 digs vs. San Jose State (Oct. 24), then added 12 kills, 11 digs and a .526 hitting percentage vs. Fresno State (Oct. 26).

The All-American averaged 5.11 kills and 2.00 digs per set on the first road trip. She started at Louisiana Tech (Sept. 25), hitting .341 with 21 kills and 11 digs. Houston then added a match-high 16 kills at New Mexico State (Sept. 27) and nine kills at San Jose State (Sept. 29). For that week, she earned WAC Player of the Week honors, tying Angelica Ljungquist and Kim Willoughby for the most conference player of the week awards in program history.

The senior had 20 kills and six digs while hitting .317 vs. Idaho (Sept. 19), before added nine kills in just two sets vs. Boise State (Sept. 20).

Houston had a big week in the Chevron Rainbow Wahine Invitational, taking tournament most outstanding player and WAC Player of the Week honors. On the week, she averaged 4.64 kills, 0.82 blocks and 0.91 digs per set.

After opening the invitational with eight kills, five digs and three blocks vs. St. Mary's (Sept. 11), Houston led UH the next two matches, posting 16 kills and six blocks vs. Pacific (Sept. 12) and 27 kills vs. Washington (Sept. 13).

She had 15 kills, eight digs and three blocks vs. Minnesota (Sept. 4). She also had a double-double with 18 kills, 15 digs and five blocks vs. UCLA (Aug. 31).

CUBI-OTINERU BRINGS ANOTHER ALL-AROUND THREAT

Aneli Cubi-Otineru continues to be a threat for the Rainbow Wahine, averaging 2.39 kills, 2.22 digs and 0.33 aces per set while hitting .279.

The Punahou graduate played well on the road. She hit .467 with nine kills at Boise State (Nov. 8), then posting eight kills, 11 digs and four blocks at Idaho (Nov. 10). She then concluded the trip with nine digs at Fresno State (Nov. 10).

The junior hit .429 with 12 kills and 10 digs vs. Nevada (Oct. 31).

Cubi-Otineru had a good week on the road, hitting .364 with five kills and six digs at Utah State (Oct. 16), then hitting .385 with 13 kills and eight digs.

The junior hit .400 with five kills, four digs and three blocks in just two sets at Louisiana Tech (Sept. 25). She then had 10 kills and 12 digs for her second double-double of the season at New Mexico State (Sept. 27).

Cubi-Otineru had two good matches to start the WAC. She started with eight kills, six digs and two aces vs. Idaho (Sept. 19), before hitting .333 with nine kills, five aces and four digs vs. Boise State (Sept. 20).

The Southern Idaho transfer made her second all-tournament team, averaging 2.80 kills and 2.40 digs per set in The Honolulu Advertiser Volleyball Challenge.

The Hale'iwa, O'ahu, native started the weekend with a 13-kill, 17-dig match vs. Minnesota (Sept. 4). She then hit .462 with eight kills in just two sets vs. Wyoming (Sept. 5) before adding seven kills and five digs vs. Cincinnati (Sept. 7).

Cubi-Otineru had a great weekend in the Wahine Classic, hitting .373 with 3.00 kills and 1.10 digs per set, earning her all-tournament honors.

The junior opened the tournament by hitting .350 with nine kills against No. 1 Penn State (Aug. 29). She then hit .571 with nine kills vs. Ohio (Aug. 30) before posting 12 kills and six digs vs. No. 6 UCLA (Aug. 31).

WAC PLAYERS OF THE WEEK

Date	Player	School
Sept. 1	Haley Larson	Idaho
Sept. 8	Emily Burke	San Jose St.
Sept. 15	Jamie Houston	Hawai'i
Sept. 22	Kanani Danielson	Hawai'i
Sept. 29	Jamie Houston	Hawai'i
Oct. 6	Lindsey Yon	New Mexico St.
Oct. 13	Amber Simpson	New Mexico St.
Oct. 20	Lindsey Yon	New Mexico St.
Oct. 27	Lindsey Baldwin	Nevada
Nov. 3	Brianna Amian	San Jose St.
Nov. 10	Emily Kortsen	Utah St.
Nov. 17		
Nov. 24		
Nov. 31		

WAHINE CLASSIC ALL-TOURNAMENT

Player	School
Aneli Cubi-Otineru	Hawai'i
Amanda Gil	UCLA
Christa Harmotto	Penn State
Ellen Herman	Ohio
Megan Hodge	Penn State
Nellie Spicer	UCLA
Nicole Fawcett (MOP)	Penn State

CHALLENGE ALL-TOURNAMENT

Player	School
Jenna Arneson	Wyoming
Aneli Cubi-Otineru	Hawai'i
Brook Dieter	Minnesota
Lauren Gibbemeyer	Minnesota
Tara Hittle	Hawai'i
Stephanie Niemer	Cincinnati
Kanani Danielson (MOP)	Hawai'i

INVITATIONAL ALL-TOURNAMENT

Player	School
Kindra Carlson	Washington
Mallori Gibson	Pacific
Kanani Danielson	Hawai'i
Amber Kaufman	Hawai'i
Tamari Miyashiro	Washington
Megan York	St. Mary's
Jamie Houston (MOP)	Hawai'i

KAUFMAN SCORING ALL THE WAY AROUND

Amber Kaufman has been a scoring machine for UH, hitting .367 with 2.02 kills, 0.93 blocks and 0.52 aces per set.

The junior hit .381 with 11 kills and five blocks at Idaho (Nov. 8), then pounded six kills while hitting .750 with three blocks at Fresno State (Nov. 10).

Kaufman hit .400 with five kills, three blocks and two aces vs. Nevada (Oct. 31), then posted six kills and three aces while hitting .429 vs. Utah State (Nov. 1)

She hit .556 with 11 kills and three blocks vs. Fresno State (Oct. 26).

The San Jose, Calif., native hit .615 with nine kills at Nevada (Oct. 18).

Kaufman hit .667 with four kills and four blocks vs. Louisiana Tech (Oct. 10), then added six more blocks vs. New Mexico State (Oct. 12).

The junior had a good first road trip for the Rainbow Wahine. She started with seven kills, four blocks, two aces and a .417 hitting percentage at Louisiana Tech (Sept. 25). She then hit .438 with eight kills at New Mexico State (Sept. 27) before hitting .400 with seven kills and five blocks in her homecoming at San Jose State (Sept. 29).

Kaufman had a big match vs. Idaho (Sept. 19) in the WAC opener, hitting .600 with 10 kills, five blocks and three aces.

The middle came up big in the Rainbow Wahine's match vs. Washington (Sept. 13), posting 10 kills, six digs and two blocks while hitting .533. But it was her performance from the service line that truly put Hawai'i over the top, breaking the school single-match record with 11 aces, a number that ties Kaufman for sixth in the NCAA record book for aces in a five-set match.

In total, Kaufman hit .462 for the Chevron Rainbow Wahine Invitational, averaging 1.91 kills, 1.09 aces and 0.64 blocks per set, earning her all-tournament honors.

The San Jose, Calif., native posted 12 kills, five blocks and a .409 hitting percentage vs. Minnesota (Sept. 4).

Last spring, Kaufman won the Western Athletic Conference title in the high jump, breaking the school record with a jump of 6 feet, 0.5 in. She then earned All-America honors after placing fifth at the NCAA Championships and then placed 12th at the U.S. Olympic Trials.

THOMAS EFFICIENTLY ADDING TO UH OFFENSE

Nickie Thomas has been UH's most efficient hitter, averaging 1.78 kills and 0.78 blocks per set while hitting .386 on the season.

The senior had five kills and three blocks at Boise State (Nov. 6) and hit .625 with five kills and four assists at Fresno State (Nov. 8).

The middle hit .625 with six kills vs. Utah State (Nov. 1).

Thomas hit .600 with 2.00 kills and 1.33 blocks per set in the matches vs. San Jose State and Fresno State. She started with five kills on just seven swings in two sets vs. San Jose State (Oct. 24), then hit .538 with seven kills and a career-high eight blocks vs. Fresno State (Oct. 26)

She played well at Nevada (Oct. 18), hitting .571 with four kills and six blocks.

The senior had a good first road trip, hitting .385 with 2.25 kills per set. She started off slow, tallying just three kills and three blocks at Louisiana Tech (Sept. 25). But Thomas then went on to hit .438 with eight kills at New Mexico State (Sept. 27) and .400 with seven kills at San Jose State (Sept. 29).

The Austin, Texas, native hit .409 with 10 kills in the WAC opener vs. Idaho (Sept. 19). She then added four kills while hitting .375 in two sets vs. Boise State (Sept. 20).

Thomas posted six kills and five blocks while hitting .600 vs. St. Mary's (Sept. 11), then had seven kills and six blocks vs. Pacific (Sept. 12).

The senior hit .714 with five kills and four blocks in just two sets vs. Ohio (Aug. 30). She then had a career-high 13 kills while hitting .526 vs. No. 6 UCLA to close out her impressive weekend.

RAINBOW WAHINE SUPERLATIVES

Overall	22-3
Conference	15-1
Non-Conference	7-2
Home	14-3
Away	8-0
Neutral	0-0
vs. Ranked Teams	2-2
vs. Unranked Teams	20-1
Three-Set Matches	18-2
Four-Set Matches	2-1
Five-Set Matches	2-0
August	1-2
September	11-0
October	6-1
November	4-0
December	0-0
Monday	2-0
Tuesday	0-0
Wednesday	0-0
Thursday	5-0
Friday	6-1
Saturday	7-0
Sunday	2-2
In Set One	21-4
In Set Two	19-6
In Set Three	22-3
In Set Four	3-2
In Set Five	2-0
When Winning Set One	20-1
When Losing Set One	2-2
When Winning Set Two	19-0
When Losing Set Two	3-3
When Winning Set Three	22-0
When Losing Set Three	0-3
When Winning Set Four	3-0
When Losing Set Four	1-1
Higher Hitting Percentage	21-1
Lower Hitting Percentage	1-3
Same Hitting Percentage	0-0
More Kills	22-1
Less Kills	0-2
Same Kills	0-0
More Blocks	16-0
Less Blocks	6-3
Same Blocks	0-0
More Digs	21-1
Less Digs	1-2
Same Digs	0-0
More Assists	22-1
Less Assists	0-2
Same Assists	0-0
More Aces	20-1
Less Aces	1-2
Same Aces	1-0
Longest Match	2:38
Shortest Match	1:10
Largest Home Crowd	7,325
Smallest Home Crowd	5,483
Largest Road Crowd	2,347
Smallest Road Crowd	206

FERRELL MAKING THE MOST OF OPPORTUNITIES

Stephanie Ferrell has been great off the bench for the Rainbow Wahine, hitting .323 with 2.54 kills per set.

The Los Angeles, Calif., native hit .300 with six kills at Boise State (Nov. 6) and then hit .364 with 11 kills at Fresno State (Nov. 10).

She played in just one set vs. Utah State (Nov. 1), hitting .667 with six kills.

Ferrell had a great match vs. Louisiana Tech (Oct. 10), posting eight kills on nine swings for a .778 hitting percentage. Ferrell was a perfect 7-for-7 to start the match before she hit a ball that couldn't clear the tape late in the third set. She then added another seven kills vs. New Mexico State (Oct. 12).

The freshman had a good week on UH's first road trip, hitting .380 with 3.00 kills per set. She started with eight kills, five digs and two blocks while hitting .583 at Louisiana Tech (Sept. 25). Ferrell added nine kills and two blocks at New Mexico State (Sept. 27) and 10 kills with a .471 hitting percentage at San Jose State (Sept. 29).

Ferrell struggled a bit in a start vs. Idaho (Sept. 19), but then came back with a good match vs. Boise State (Sept. 20), hitting .500 with five kills in just two sets.

The Los Angeles, Calif., native had a great tournament in the Chevron Rainbow Wahine Invitational. Ferrell averaged 2.22 kills per set while hitting an amazing .500.

The redshirt freshman hit .857 with six kills vs. St. Mary's (Sept. 11) and .625 with five kills vs. Pacific (Sept. 12), before taking a big role in UH's five-set win over Washington (Sept. 13). Ferrell hit .294 with nine kills in the match.

Ferrell had a career-high 13 kills and three blocks in her first start of the season vs. Wyoming (Sept. 5).

MAFUA SETS IT ALL UP

Dani Mafua has started the majority of the season at setter, ranking in the top 10 of the country with 11.53 assists, adding 1.99 digs and 0.47 kills per set.

Mafua set the offense well, posting 45 assists and 12 digs vs. San Jose State (Oct. 24), then setting the team to a .454 hitting percentage with 50 assists and six digs vs. Fresno State (Oct. 26).

The sophomore had two good matches on the road. She started with 30 assists, two digs and two blocks at Louisiana Tech (Sept. 25). She then had 41 assists, nine digs and two kills at New Mexico State (Sept. 27) before sitting out the San Jose State match (Sept. 29), due to illness.

The Kapolei, O'ahu, native had 55 assists and eight digs vs. Idaho (Sept. 19) and 31 assists vs. Boise State (Sept. 20).

The Mid-Pacific Institute graduate had a great weekend in the Chevron Rainbow Wahine Invitational. She started with 29 assists and 12 digs vs. St. Mary's (Sept. 11). She then had 40 assists and seven digs vs. Pacific (Sept. 12), before posting a season-high 63 assists and seven digs vs. Washington (Sept. 13).

Mafua started The Honolulu Advertiser Volleyball Challenge with 51 assists and 11 digs vs. Minnesota (Sept. 4). She added 16 assists and eight digs in just two sets vs. Wyoming (Sept. 5) before posting 34 assists, six digs and three kills on just three attempts vs. Cincinnati (Sept. 7).

The sophomore played well vs. UCLA (Aug. 31), posting her first career double-double with 52 assists and 11 digs.

WE'RE GOING STREAKING...

The Rainbow Wahine have a bunch of impressive streaks that they are currently on:

Conference titles	14
WAC titles	13
Conference Tournament titles	8
Winning seasons	35
25+ win seasons	14
Appearances in the NCAA Tournament	15
Weeks ranked in the Coaches Poll	246

HAWAI'I IN THE WAC STATS

ALL MATCHES

INDIVIDUAL

Hitting Percentage

No.	Player	Pct.
1st	Nickie Thomas	.386
2nd	Amber Kaufman	.376
3rd	Stephanie Ferrell	.323
7th	Kanani Danielson	.298
9th	Aneli Cubi-Otineru	.279

Kills

No.	Player	KPS
2nd	Jamie Houston	4.01
8th	Kanani Danielson	2.95

Assists

No.	Player	APS
1st	Dani Mafua	11.53

Service Aces

No.	Player	SAPS
1st	Amber Kaufman	0.52
3rd	Aneli Cubi-Otineru	0.33

Digs

No.	Player	DPS
8th	Kanani Danielson	3.12
9th	Tara Hittle	3.00

Points

No.	Player	PPS
2nd	Jamie Houston	4.46

TEAM

Rank	Category	Stat
1st	Hitting Percentage	.301
1st	Assists Per Game	14.02
4th	Blocks Per Game	2.22
3rd	Opp. Hitting Pct.	.163
1st	Kills Per Game	14.96
1st	Service Aces Per Game	1.49
3rd	Digs Per Game	14.33

WAC MATCHES

INDIVIDUAL

Hitting Percentage

No.	Player	Pct.
1st	Nickie Thomas	.383
2nd	Amber Kaufman	.379
4th	Stephanie Ferrell	.331
6th	Kanani Danielson	.305
7th	Jamie Houston	.295

Kills

No.	Player	KPS
2nd	Jamie Houston	4.38

Assists

No.	Player	APS
1st	Dani Mafua	12.00

Service Aces

No.	Player	SAPS
1st	Amber Kaufman	0.44
2nd	Aneli Cubi-Otineru	0.43
4th	Tara Hittle	0.38

Points

No.	Player	PPS
3rd	Jamie Houston	4.75

TEAM

Rank	Category	Stat
1st	Hitting Percentage	.309
1st	Assists Per Game	14.22
4th	Blocks Per Game	2.15
2nd	Opp. Hitting Pct.	.130
1st	Kills Per Game	15.20
1st	Service Aces Per Game	1.64
4th	Digs Per Game	14.44

HITTLE TAKING A LIKING TO LIBERO POSITION

Tara Hittle has been solid since moving over to the libero position this season, averaging 3.00 digs per set.

Hittle posted two double-digit dig matches on the road with 11 digs at Boise State (Nov. 6) and 12 digs at Idaho (Nov. 8).

The Colorado Springs, Colo., native had 11 digs vs. Utah State (Nov. 1).

Hittle led all players with 16 digs in the match vs. Fresno State (Oct. 26).

The senior had 13 digs at Louisiana Tech (Sept. 25), picking up two kills as she played one set as an outside hitter. She then set a new career-high at New Mexico State (Sept. 27) with four aces while adding six digs, before posing eight kills, seven digs and two aces, playing the full match as an outside hitter at San Jose State (Sept. 29).

Hittle had a good start to WAC play, posting 16 digs vs. Idaho (Sept. 19).

The Colorado Springs, Colo., native averaged 3.09 digs per set in the Chevron Rainbow Wahine Invitational.

Hittle tallied 29 digs in The Honolulu Advertiser Volleyball Challenge, earning all-tournament honors.

The senior had 11 digs vs. Penn State (Aug. 29), nine digs vs. Ohio (Aug. 30) and 16 digs vs. UCLA (Aug. 31).

The solid play also helped Hittle reach a milestone as she became the 11th player in Hawai'i history to eclipse the 1,000-dig mark vs. Ohio. Hittle currently sits in fourth on the UH career dig list at 1,174, just 46 digs behind Kanoe Kamana'o for third.

Hittle played the 2007-08 season for the Rainbow Wahine basketball team, starting nine games. She averaged 7.3 points and 7.2 rebounds in 23.1 minutes per game.

STAN SHERIFF CENTER WELCOMES TWO-MILLIONTH FAN

The Stan Sheriff Center has welcomed record volleyball crowds since opening its doors in September, 2004. While leading the nation in attendance again this season, UH also reached a new attendance milestone, welcoming in the two-millionth fan to watch a women's volleyball match in the arena on Oct. 10, vs. Louisiana Tech.

UH's total attendance in 14-plus seasons is 2,031,650, as the Rainbow Wahine have led the nation in attendance since 1995, the first full season in the arena.

ROAD WARRIORS

Hawai'i has played very well on the road over the past few years, boasting a 61-2 (.968) since the 2002 season, including a perfect 8-0 record this season.

The ironic thing about UH's run on the road is that their only two losses came away from the opposing team's "home court."

Hawai'i lost their first road match in that stretch in Las Cruces, N.M., on Oct. 13, 2006. But because New Mexico State was doing construction on the Pan American Center during the 2006 season, the match was played at Las Cruces High School.

The Rainbow Wahine's other loss came at Nebraska on Oct. 21, 2007. The match was played at the Devaney Center in front of an NCAA regular season record crowd of 13,396, instead of their normal facility, the NU Coliseum.

UH was on a 43-match road win streak before the loss at NMSU, the longest road winning streak in program history.

THIS WEEK IN RAINBOW WAHINE HISTORY

In the 30+ years of Rainbow Wahine volleyball, many big events have occurred. Here are a couple of events that happened this week in UH women's volleyball history.

Nov. 16-17, 1995 - Hawai'i sweeps through long-time nemesis Long Beach State twice in the schools' only two meetings of the year. The 49ers had ended UH's season in five of the previous six years. The Rainbow Wahine went on to their first perfect regular season.

Nov. 16-18, 2001 - In the revival of the WAC Tournament, the Rainbow Wahine sweep through Tulsa, Fresno State and San Jose State to take the title in San Jose, Calif.

Nov. 15, 2002 - UH defeats Fresno State in five games on the road in the only match in UH history that two players, Lily Kahumoku (33) and Kim Willoughby (30), have 30 or more kills in a match.

HEAD COACH DAVE SHOJI

Head Coach Dave Shoji has been through it all as the head of the Rainbow Wahine volleyball program. He's seen his program go from a small upstart team to one of the most visual teams in the country.

Shoji ranks amongst the best in the coaching ranks no matter which way you look at it. He's second only to UCLA's Andy Banachowski in career victories with 953 and to Penn State's Russ Rose in career winning percentage (.849). He's also one of just five coaches that have claimed four national championships, all ranking second to Banachowski's six titles.

But the impact he has made on the state of Hawai'i could be even greater than the one he has on volleyball. Shoji's program has made women's volleyball into a staple of the islands.

Ever since the building of the Stan Sheriff Center in 1994, Hawai'i has led the nation in attendance, averaging over 7,000 a match. All Rainbow Wahine volleyball home matches are televised live throughout the islands with the majority of matches, home and away, available on the radio.

The honors have piled up for Shoji over the years. He is a nine-time conference and region Coach of the Year and was named the national Coach of the Year in 1982. Shoji was named to the list of all-time great coaches by USA Volleyball in 2002. He has also recently been inducted to Hawai'i Sports Hall of Fame and was named as the coach of the NCAA 25th Anniversary team.

In 1975, a young Shoji took over the reins of the UH women's volleyball program. He was just 28 years old with no clue that he would turn a one-year-old program into a national powerhouse for the next three decades.

The team was coming off a 9-1 campaign in 1974 that ended with the Rainbow Wahine falling to UCLA in the national title match at the AIAW Championship.

In Shoji's first four years at the helm of the program, he took the team to two more national title matches before it finally broke through to take the title in 1979 with a five-game victory over Utah State in the AIAW finals.

It was the school's first-ever team national championship and a sign of great things to come for the young program.

In 1981, Shoji became UH's first full-time coach for a women's program. He led the team to another national title, this time in the new NCAA Tournament in 1982, beating the USC Women of Troy in a come-from-behind five-game thriller.

Shoji would lead the team to another title in 1983 with a straight-set win over UCLA, becoming the first school to win back-to-back national championships.

The Rainbow Wahine again returned to the national championship match in 1987, capping a 37-2 season with a sweep of Stanford for the program's fourth national title and third NCAA title.

The team lost to Texas in the 1988 national championship match, then went through a stretch of five frustrating losses in six years to rival Long Beach State in the NCAA Regionals, holding them out of the NCAA Championships.

Hawai'i would finally make that return in 1996, dropping just one game in the first four matches of the NCAA Tournament. But another long-time nemesis of the Rainbow Wahine, Stanford, stopped UH's bid for a national title, sweeping the Rainbow Wahine in the championship match.

Under Shoji, UH volleyball finished in the Top 10 in 21 of the 26 final AVCA polls, and ranked in the top five 14 times. They have made it to the postseason in all but one year, finishing with a winning record in all 33 seasons.

The 62-year-old was also responsible for the start of the men's volleyball program in 1978. Shoji served as the men's coach at UH from 1978-85, compiling a record of 81-48, leading the team to a Western Collegiate Volleyball Conference title in 1980.

Shoji was a three-sport athlete at Upland High School in California, playing football, basketball and baseball. He then moved on to UC Santa Barbara, where he played baseball for a year, along with three years of volleyball. He earned All-America honors as a volleyball player in 1968 and '69. He earned his bachelor's degree in physical education in 1969.

After spending two years in the U.S. Army, Shoji returned to Hawai'i to coach the Kalani High School girls' and boys' volleyball teams. He then took an assistant coaching job at Punahou School.

Shoji and his wife, the former Mary Teneffos, reside in Manoa. Mary Shoji was an assistant coach for the Punahou girl's volleyball team this past year.

They have three children. Cobey, 29, works at Stanford University; Kawika, 20, and Erik, 18, play for the Stanford men's volleyball team.

SHOJI NOTES

- .850 winning percentage is second all-time among active head coaches
- One of just three division one coaches to win 900 matches
- 30, 20-plus-win seasons
- 16, 30-plus-win seasons
- 34 consecutive winning seasons
- Four national championships (1979, '82, '83, '87)
- Eight NCAA Championships Appearances
- 22 NCAA Regional Appearances
- 26 NCAA Tournament Appearance
- Coached 39 All-Americans
- USA Volleyball All-Time Great Volleyball Coach
- Nine-time Conference Coach of the Year
- Nine-time Regional Coach of the Year
- National Coach of the Year in 1982

YEAR	OVERALL				CONFERENCE			NATIONAL FINISH
	W	L	T	PCT.	W	L	PCT.	
1975	16	2	0	.889	—	—	—	2nd AIAW
1976	14	5	0	.737	—	—	—	3rd AIAW
1977	22	5	0	.815	—	—	—	2nd AIAW
1978	28	10	1	.731	—	—	—	3rd AIAW
1979	36	5	0	.878	—	—	—	AIAW Champions
1980	34	10	0	.773	—	—	—	3rd AIAW
1981	37	2	0	.949	—	—	—	NCAA Regional Finals
1982	33	1	0	.971	—	—	—	NCAA Champions
1983	34	2	0	.944	—	—	—	NCAA Champions
1984	33	11	0	.750	—	—	—	NCAA First Round
1985	28	13	0	.683	10	6	.625	NCAA Regional Semifinals
1986	31	7	0	.816	15	3	.833	NCAA Regional Finals
1987	37	2	0	.949	17	1	.944	NCAA Champions
1988	33	3	0	.917	18	0	1.000	2nd NCAA
1989	29	3	0	.906	17	1	.944	NCAA Regional Finals
1990	28	6	0	.824	16	2	.889	NCAA Regional Semifinals
1991	26	5	0	.839	15	3	.833	NCAA Regional Finals
1992	15	12	0	.556	11	7	.611	No Post-season
1993	19	11	0	.633	13	5	.722	NCAA Regional Finals
1994	25	5	0	.833	15	3	.833	NCAA Regional Semifinals
1995	31	1	0	.969	18	0	1.000	NCAA Regional Finals
1996	35	3	0	.921	16	0	1.000	2nd NCAA
1997	25	8	0	.758	14	0	1.000	NCAA First Round
1998	32	3	0	.914	13	1	.929	NCAA Regional Finals
1999	29	2	0	.935	14	0	1.000	NCAA Regional Semifinals
2000	31	1	0	.969	16	0	1.000	NCAA Semifinals
2001	29	6	0	.852	13	0	1.000	NCAA Regional Semifinals
2002	34	2	0	.958	13	0	1.000	NCAA Semifinals
2003	36	2	0	.947	13	0	1.000	NCAA Semifinals
2004	30	1	0	1.000	13	0	1.000	NCAA Regional Semifinals
2005	27	7	0	.794	16	0	1.000	NCAA Regional Semifinals
2006	29	6	0	.829	15	1	.938	NCAA Regional Finals
2007	27	6	0	.818	15	1	.938	NCAA Second Round
2008	22	3	0	.880	15	1	.938	
Totals	975	172	1	.850	351	35	.909	4 National Titles

OPPONENT SECTION

UTAH VALLEY QUICK FACTS



Location _____ Orem, UT
 Enrollment _____ 24,000
 Nickname _____ Wolverines
 Colors _____ Green and Gold
 Athletics Director _____ Mike Jacobson
 Conference _____ Independent
 Arena (Capacity) _____ Shurian Family (2,000)
 Head Coach _____ Sam Atoa
 Career Record (Years) _____ 74-62 (5)
 Record at School (Years) _____ same
 Assistant Coaches _____ Lacey Koelliker,
 _____ Scott Lee
 Volleyball Office Phone _____ (801) 863-8653
 2007 Record _____ 18-10
 2007 Conference Record (Finish) _____ NA
 2007 Final AVCA Ranking _____ N/R
 Postseason Play _____ None
 Letterwinners Returning/Lost _____ 9/6
 Starters Returning/Lost _____ 4/3
 Volleyball SID _____ Dave Kimball
 SID Office Phone _____ (801) 863-6231
 SID Office Fax _____ (801) 863-8813
 Press Row Phone _____ (801) 362-1548
 Website _____ wolverinegreen.com
 UH vs. UV Series _____ First meeting

SCOUTING THE WOLVERINES

The Utah Valley Wolverines come into the match with a record of 10-11, posting a win at Brigham Young-Hawai'i on Nov. 12.

Utah Valley has played a tough schedule this season, playing ranked teams like Utah, Santa Clara and Oregon while also playing Kansas, Washington State and Utah State and Boise State from the WAC.

The Wolverines won the 2007 Division I Independent Championship.

Kayli Broadbent leads the Wolverines, averaging 3.56 kills and 1.52 digs per set. Kristin Anderson is hitting .294 with 2.55 kills and 1.45 blocks per set while Jaicee Kuresa averages 1.99 kills and 0.82 blocks per set.

Two setters have played for the Wolverines this season. Kristi Lindley averages 8.45 assists and 1.62 digs per set while Chelsea Fa'alogo is averaging 5.29 assists per set.

Utah Valley will be facing the Rainbow Wahine for the first time in program history this weekend.

2008 UTAH VALLEY STATISTICS

Utah Valley Combined Team Statistics (as of Nov 13, 2008) All matches

RECORD:	OVERALL	HOME	AWAY	NEUTRAL
ALL GAMES	10-11	8-1	2-7	0-3
CONFERENCE	0-0	0-0	0-0	0-0
NON-CONFERENCE	10-11	8-1	2-7	0-3

#	Player	sp	Attack				Set		Serve			Dig		Blocking					points			
			k	k/s	e	ta	pct	a	a/s	sa	se	sa/s	re	dig	dig/s	bs	ba	total		blk/s	be	bhe
6	Kayli Broadbent	73	260	3.56	136	694	.179	10	0.14	19	37	0.26	23	111	1.52	3	28	31	0.42	0	1	-
17	Kristin Anderson	71	181	2.55	59	415	.294	6	0.08	0	0	0.00	0	18	0.25	9	94	103	1.45	6	1	-
10	Jaicee Kuresa	74	147	1.99	58	404	.220	3	0.04	0	4	0.00	4	28	0.38	5	56	61	0.82	5	0	-
2	Chelsey Garfield	64	117	1.83	92	396	.063	10	0.16	8	13	0.12	21	73	1.14	1	21	22	0.34	1	1	-
12	Faith Tusieseina	23	37	1.61	19	111	.162	0	0.00	1	0	0.04	0	6	0.26	1	12	13	0.57	0	0	-
16	Marla Morin	7	11	1.57	3	23	.348	0	0.00	0	2	0.00	0	2	0.29	1	3	4	0.57	1	0	-
9	Melissa Fifita	21	30	1.43	18	74	.162	0	0.00	2	4	0.10	4	9	0.43	0	1	1	0.05	0	0	-
15	Sarah Clement	47	44	0.94	14	99	.303	0	0.00	8	15	0.17	0	23	0.49	2	35	37	0.79	5	0	-
4	Dani Robison	45	36	0.80	18	103	.175	0	0.00	8	20	0.18	0	14	0.31	1	33	34	0.76	0	0	-
1	Kristi Lindley	64	22	0.34	11	88	.125	541	8.45	6	21	0.09	0	104	1.62	1	33	34	0.53	1	7	-
18	Chelsea Fa'alogo	42	12	0.29	2	28	.357	222	5.29	4	9	0.10	1	27	0.64	0	20	20	0.48	1	3	-
5	Lanni O'Reilly	49	4	0.08	5	17	-.059	3	0.06	7	6	0.14	6	42	0.86	0	0	0	0.00	0	0	-
11	Kathleen Stevens	72	5	0.07	3	25	.080	10	0.14	15	33	0.21	14	104	1.44	0	0	0	0.00	0	0	-
3	Allyce Wilson	76	3	0.04	1	10	.200	40	0.53	5	7	0.07	25	369	4.86	0	0	0	0.00	0	6	-
	TEAM	-	-	-	-	-	-	-	-	-	-	-	6	-	-	-	-	-	-	-	-	-
	UTAH VALLEY	97	909	9.37	439	2487	.189	845	8.71	83	171	0.86	104	930	9.59	24	336	192.0	1.98	20	19	-
	Opponents	97	872	8.99	439	2489	.174	804	8.29	104	144	1.07	83	921	9.49	29	256	157.0	1.62	34	23	-

LAST WEEK'S BOX SCORES

Volleyball Box Score 2008 University of Hawai'i Volleyball #7 Hawai'i vs Boise State (Nov 06, 2008 at Boise, ID)

#	Hawai'i	Attack					Serve			Block				Pts		
		S	K	E	TA	Pct	Ast	SA	SE	RE	Dig	BS	BA		BE	BHE
2	Kaufman, Amber	3	4	2	8	.250	0	3	1	0	3	0	1	0	0	7.5
5	Danielson, Kanani	3	9	5	26	.154	1	1	0	0	18	0	0	0	0	10.0
8	Houston, Jamie	3	11	1	18	.556	1	0	0	0	7	0	1	0	0	11.5
9	Thomas, Nickie	3	5	2	10	.300	0	0	0	0	0	1	2	0	0	7.0
11	Mafua, Dani	3	2	0	2	1.000	38	1	0	0	3	0	2	2	0	4.0
13	Cubi-Otineru, Aneli	3	9	2	15	.467	1	1	2	1	4	0	0	0	0	10.0
1	Ferrell, Stephanie	2	6	3	10	.300	0	0	0	0	1	0	0	0	0	7.0
3	Hittle, Tara	2	1	0	1	1.000	0	0	0	1	11	0	0	0	0	1.0
6	Keefe, Jessica	3	0	0	1	.000	1	0	0	1	0	0	0	0	0	0.0
7	Ka'aihue, Elizabeth	2	0	0	0	.000	0	0	0	1	1	0	0	0	0	0.0
10	Brandt, Stephanie	3	0	0	0	.000	3	1	0	0	1	0	0	0	0	1.0
16	Fowler, Catherine	1	0	0	0	.000	0	0	0	0	0	0	0	0	0	0.0
Totals		3	47	15	91	.352	45	7	3	4	48	2	6	2	0	59.0

Team Attack By Set

Set	K	E	TA	Pct
1	14	6	27	.296
2	18	5	39	.333
3	15	4	25	.440

TOTAL TEAM BLOCKS: 5.0

SET SCORES

	1	2	3	Team Records:
Hawai'i (3)	25	25	25	20-3, 13-1 WAC
Boise State (0)	15	13	17	7-17, 3-10 WAC

#	Boise State	Attack					Serve			Block				Pts		
		S	K	E	TA	Pct	Ast	SA	SE	RE	Dig	BS	BA		BE	BHE
1	Klein, Mandy	3	0	1	3	-.333	13	0	1	0	3	0	0	0	0	0.0
3	Rose, Jeanene	2	0	0	0	.000	0	0	1	2	3	0	0	0	1	0.0
14	Blaha, Lydia	3	1	3	8	-.250	0	0	0	0	1	1	1	0	0	2.5
15	Maughan, Sadie	3	5	1	11	.364	0	0	0	0	0	0	1	1	0	5.5
22	Jenkins, Jeanette	3	2	1	23	.043	0	1	0	0	1	1	0	0	0	4.0
55	King, Alisha	3	5	2	24	.125	0	1	2	1	6	0	1	0	0	6.5
4	Lewis, Kati	2	0	0	0	.000	0	0	0	1	1	0	0	0	0	0.0
5	Griffin, Elizabeth	2	3	2	10	.100	0	0	0	0	1	0	1	0	0	3.5
8	Pledger, Eliza	2	1	1	4	.000	0	0	0	0	0	0	0	0	0	1.0
11	Ericson, Maren	1	1	2	6	-.167	0	0	0	0	0	0	0	0	0	1.0
13	Hamm, Lauren	3	0	0	1	.000	0	2	0	3	5	0	0	0	0	2.0
17	Remy, Amanda	3	0	0	0	.000	0	0	0	0	4	0	0	0	0	0.0
19	Diemer, Alexandra	1	0	0	0	.000	3	0	0	0	0	0	0	0	0	0.0
20	Botts, Emily	1	0	0	0	.000	0	0	0	0	0	0	0	0	0	0.0
Totals		3	18	13	90	.056	16	4	4	7	25	2	4	1	1	26.0

Team Attack By Set

Set	K	E	TA	Pct
1	6	5	30	.033
2	5	3	35	.057
3	7	5	25	.080

TOTAL TEAM BLOCKS: 4.0

SET SCORES

	1	2	3	Team Records:
Hawai'i (3)	25	25	25	22-3 (15-1 WAC)
Fresno State (0)	9	16	17	6-17 (3-11 WAC)

Site: Boise, ID (Bronco Gym)
Date: Nov 06, 2008 Attend: 273 Time: 1:10
Referees: Tom Given, Garrod Shumway

Volleyball Box Score 2008 University of Hawai'i Volleyball Hawai'i vs Fresno State (Nov 10, 2008 at FRESNO, Calif.)

#	Hawai'i	Attack					Serve			Block				Pts		
		S	K	E	TA	Pct	Ast	SA	SE	RE	Dig	BS	BA		BE	BHE
2	Kaufman, Amber	3	6	0	8	.750	0	1	2	0	0	0	3	0	0	8.5
5	Danielson, Kanani	3	6	0	11	.545	0	0	1	0	8	0	0	0	0	6.0
8	Houston, Jamie	3	9	2	16	.438	1	0	1	0	3	1	1	0	0	10.5
9	Thomas, Nickie	3	5	0	8	.625	4	0	0	0	1	0	0	0	0	5.0
11	Mafua, Dani	3	1	0	3	.333	30	3	0	0	3	0	1	0	0	4.5
13	Cubi-Otineru, Aneli	3	3	0	6	.500	1	1	2	0	9	0	1	0	0	4.5
1	Ferrell, Stephanie	2	11	3	22	.364	0	0	0	0	1	0	0	0	0	11.0
3	Hittle, Tara	2	0	0	0	.000	0	0	1	0	3	0	0	0	0	0.0
6	Keefe, Jessica	1	0	1	4	-.250	0	0	0	0	0	0	0	0	0	0.0
7	Ka'aihue, Elizabeth	2	0	0	1	.000	1	0	1	0	12	0	0	0	0	0.0
10	Brandt, Stephanie	2	0	0	0	.000	4	0	0	0	2	0	0	0	1	0.0
16	Fowler, Catherine	2	1	2	5	-.200	0	0	0	0	0	0	0	0	0	1.0
Totals		3	42	8	84	.405	41	5	8	0	42	1	6	0	1	51.0

Team Attack By Set

Set	K	E	TA	Pct
1	14	0	21	.667
2	13	2	30	.367
3	15	6	33	.273

TOTAL TEAM BLOCKS: 4.0

SET SCORES

	1	2	3	Team Records:
Hawai'i (3)	25	25	25	22-3 (15-1 WAC)
Fresno State (0)	9	16	17	6-17 (3-11 WAC)

#	Fresno State	Attack					Serve			Block				Pts		
		S	K	E	TA	Pct	Ast	SA	SE	RE	Dig	BS	BA		BE	BHE
1	Munson, Allannah	3	1	1	4	.000	20	0	0	0	2	0	0	0	0	1.0
6	Leonardo, Kelly	3	4	0	7	.571	0	0	0	0	0	0	1	0	0	4.5
8	Platt, Baylee	3	10	7	31	.097	0	0	0	2	6	0	1	0	0	10.5
9	Gera, Lacey	3	5	5	21	.000	0	0	1	1	0	0	0	0	2	5.0
11	Berger, Lauren	3	4	1	16	.188	0	0	1	0	1	0	0	0	0	4.0
21	Van Grouw, Kasey	3	1	5	13	-.308	1	0	1	0	7	0	0	0	0	1.0
4	Mason, Kelly	1	0	0	0	.000	0	0	0	0	0	0	0	0	0	0.0
5	Moss, Meghan	3	0	0	0	.000	0	0	2	1	7	0	0	0	0	0.0
10	Oglesby, Sarah	2	0	0	0	.000	0	0	0	0	0	0	0	0	0	0.0
12	Gera, Lisa	3	0	0	0	.000	1	0	0	0	8	0	0	0	0	0.0
17	Atwal, Sukhjit	2	0	1	3	-.333	1	0	0	0	0	0	0	0	0	0.0
Team										1						
Totals		3	25	20	95	.053	23	0	5	5	31	0	2	0	2	26.0

Team Attack By Set

Set	K	E	TA	Pct
1	5	9	24	-.167
2	11	5	37	.162
3	9	6	34	.088

TOTAL TEAM BLOCKS: 1.0

SET SCORES

	1	2	3	Team Records:
FRESNO, Calif. (Save Mart Center)				
Date: Nov 10, 2008 Attend: 1317 Time: 1:18				
Referees: Verna Klubnikin, Bob McCarthy				

Volleyball Box Score 2008 University of Hawai'i Volleyball #7 Hawai'i vs Idaho (Nov 08, 2008 at Moscow, Idaho)

#	Hawai'i	Attack					Serve			Block				Pts		
		S	K	E	TA	Pct	Ast	SA	SE	RE	Dig	BS	BA		BE	BHE
2	Kaufman, Amber	3	11	3	21	.381	1	1	0	0	2	0	5	0	0	14.5
5	Danielson, Kanani	3	10	0	29	.345	1	0	0	0	12	1	0	0	0	11.0
8	Houston, Jamie	3	5	6	23	-.043	0	0	0	0	5	2	2	0	0	8.0
9	Thomas, Nickie	3	5	3	14	.143	0	0	0	0	1	1	1	0	0	6.5
11	Mafua, Dani	3	3	0	6	.500	37	0	1	0	4	0	2	0	0	4.0
13	Cubi-Otineru, Aneli	3	8	3	20	.250	0	1	0	0	11	0	4	0	1	11.0
1	Ferrell, Stephanie	2	1	2	4	-.250	0	0	0	0	0	0	0	0	0	1.0
3	Hittle, Tara	3	0	0	0	.000	0	1	0	1	12	0	0	0	0	1.0
6	Keefe, Jessica	1	0	0	0	.000	0	0	0	0	0	0	0	0	0	0.0
7	Ka'aihue, Elizabeth	1	0	0	0	.000	0	0	0	0	0	0	0	0	0	0.0
10	Brandt, Stephanie	3	0	0	1	.000	0	0	0	0	8	0	0	0	0	0.0
Totals		3	43	17	118	.220	39	3	1	1	55	4	14	0	1	57.0

Team Attack By Set

Set	K	E	TA	Pct
1	11	4	34	.206
2	14	4	38	.263
3	18	9	46	.196

TOTAL TEAM BLOCKS: 11.0

SET SCORES

	1	2	3	Team Records:
Hawai'i (3)	25	25	25	21-3, 14-1
Idaho (0)	17	13	21	16-9, 9-5

#	Idaho	Attack					Serve			Block				Pts		
		S	K	E	TA	Pct	Ast	SA	SE	RE	Dig	BS	BA		BE	BHE
1	Taylor, Kelsey	3	4	2	10	.200	0	0	0	0	0	0	1	1	0	4.5
9	Loney, Sarah	3	6	1	13	.385	0	0	1	1	7	0	2	1	0	7.0
10	Larsen, Haley	3	9	10	37	-.027	0	0	4	0	4	0	0	0	0	9.0
11	James, Kelsey	3	0	4	7	-.571	28	0	0	0	3	0	1	0	0	0.5
14	Rice, Meredith	3	0	0	0	.000	1	0	1	1	9	0	0	0	0	0.0
15	McKinney, Anna	3	5	2	17	.176	0	0	0	0	1	1	3	0	0	7.5
3	Tribley, Katie	1	0	0	0	.000	0	0	0	0	2	0	0	0	0	0.0
5	Yonker, Kelsey	3	0	0	0</											

SEASON STATISTICS

RECORD:	OVERALL	HOME	AWAY	NEUTRAL
ALL GAMES	22-3	14-3	8-0	0-0
CONFERENCE	15-1	7-1	8-0	0-0
NON-CONFERENCE	7-2	7-2	0-0	0-0

#	Player	sp	Attack				Set		Serve			Dig		Blocking					points				
			k	k/s	e	ta	pct	a	a/s	sa	se	sa/s	re	dig	dig/s	bs	ba	total		blk/s	be	bhe	
8	Houston, Jamie	77	309	4.01	125	713	.258	12	0.16	4	20	0.05	2	142	1.84	9	43	52	0.68	6	2	-	
5	Danielson, Kanani	77	227	2.95	67	537	.298	24	0.31	7	10	0.09	7	240	3.12	5	28	33	0.43	7	0	-	
13	Cubi-Otineru, Aneli	76	182	2.39	62	430	.279	17	0.22	25	41	0.33	9	169	2.22	2	32	34	0.45	2	2	-	
2	Kaufman, Amber	81	164	2.02	37	338	.376	19	0.23	42	29	0.52	0	57	0.70	3	72	75	0.93	4	2	-	
1	Ferrell, Stephanie	52	132	2.54	45	269	.323	3	0.06	0	3	0.00	5	28	0.54	3	12	15	0.29	0	0	-	
9	Thomas, Nickie	69	123	1.78	27	249	.386	18	0.26	1	0	0.01	1	10	0.14	11	43	54	0.78	6	1	-	
11	Mafua, Dani	78	37	0.47	6	76	.408	899	11.53	17	20	0.22	0	155	1.99	2	20	22	0.28	7	5	-	
3	Hittle, Tara	76	17	0.22	10	49	.143	28	0.37	18	14	0.24	13	228	3.00	0	1	1	0.01	0	1	-	
16	Fowler, Catherine	20	14	0.70	8	38	.158	1	0.05	0	0	0.00	0	5	0.25	0	16	16	0.80	3	0	-	
6	Keefe, Jessica	51	11	0.22	4	40	.175	2	0.04	0	0	0.00	1	8	0.16	0	13	13	0.25	0	0	-	
14	Simmons, Amanda	10	5	0.50	2	20	.150	3	0.30	0	0	0.00	0	1	0.10	0	6	6	0.60	0	0	-	
10	Brandt, Stephanie	66	4	0.06	1	8	.375	119	1.80	7	10	0.11	0	71	1.08	1	6	7	0.11	0	5	-	
7	Ka'aihue, Elizabeth	35	1	0.03	0	2	.500	2	0.06	1	6	0.03	4	48	1.37	0	0	0	0.00	0	0	-	
18	Lee, Jayme	15	1	0.07	0	1	1.000	3	0.20	0	1	0.00	1	13	0.87	0	0	0	0.00	0	0	-	
TEAM		-	-	-	-	-	-	-	-	-	-	-	8	-	-	-	-	-	-	-	-	-	-
HAWAII		82	1227	14.96	394	2770	.301	1150	14.02	122	154	1.49	51	1175	14.33	36	292	182.0	2.22	35	18	-	
Opponents		82	886	10.80	446	2705	.163	809	9.87	51	170	0.62	122	942	11.49	29	241	149.5	1.82	40	13	-	

Team Statistics	HAWAII	OPP
ATTACK		
Kills	1227	886
Errors	394	446
Total Attacks	2770	2705
Attack Pct	.301	.163
Kills/Set	15.0	10.8
SET		
Assists	1150	809
Attempts	2712	2658
Assist Pct	.424	.304
Assists/Set	14.0	9.9
SERVE		
Aces	122	51
Errors	154	170
Attempts	1971	1560
Serve Pct	.922	.891
Aces/Set	1.5	0.6
SERVE RECEPTIONS		
Errors	51	122
Errors/Set	0.6	1.5
Attempts	1388	1812
Reception Pct	.963	.933
DEFENSE		
Digs	1175	942
Digs/Set	14.3	11.5
BLOCKING		
Block Solo	36	29
Block Assist	292	241
Total Blocks	182.0	149.5
Blocks Per Game	2.2	1.8
Block Errors	35	40
Ball handling errors	18	13
ATTENDANCE		
Total	104352	7538
Dates/Avg Per Date	17/6138	8/942
Neutral site #/Avg	0/0	
Current win streak	9	-
Home win streak	4	-

Date	Opponent	Score	Score by set	Att.
Aug 29	#1 PENN STATE	L 0-3	21-25,19-25,19-25	7111
Aug 30	OHIO	W 3-0	25-19,25-12,25-12	5824
Aug 31	#6 UCLA	L 1-3	25-23,23-25,24-26,28-30	6552
Sep 04	#12 MINNESOTA	W 3-2	25-22,21-25,25-19,23-25,15-7	5564
Sep 05	WYOMING	W 3-0	25-15,25-10,25-18	5551
Sep 07	CINCINNATI	W 3-0	25-11,25-17,25-23	5565
Sep 11	ST. MARY'S	W 3-0	25-22,25-16,25-8	5728
Sep 12	PACIFIC	W 3-0	25-21,25-22,25-23	6184
Sep 13	#9 WASHINGTON	W 3-2	20-25,27-29,26-24,25-14,16-14	7325
*Sep 19	IDAHO	W 3-1	27-29,25-21,25-16,25-14	6029
*Sep 20	BOISE STATE	W 3-0	25-11,25-18,29-27	6485
*Sep 25	at Louisiana Tech	W 3-0	25-11,25-20,25-16	206
*Sep 27	at New Mexico State	W 3-0	26-24,25-20,25-23	2347
*Sep 29	at San Jose State	W 3-0	25-17,25-20,25-20	738
*Oct 10	LOUISIANA TECH	W 3-0	25-15,25-19,25-9	6480
*Oct 12	NEW MEXICO STATE	L 0-3	22-25,24-26,21-25	6619
*Oct 16	at Utah State	W 3-0	25-18,25-18,25-18	756
*Oct 18	at Nevada	W 3-0	25-19,25-20,25-17	846
*Oct 24	SAN JOSE STATE	W 3-0	25-12,25-22,26-24	6188
*Oct 26	FRESNO STATE	W 3-1	25-15,19-25,25-14,25-12	5570
*Oct 31	NEVADA	W 3-0	25-12,25-23,25-16	5483
*Nov 01	UTAH STATE	W 3-0	25-19,25-14,25-13	6094
*Nov 06	at Boise State	W 3-0	25-15,25-13,25-17	273
*Nov 08	at Idaho	W 3-0	25-17,25-13,25-21	1055
*Nov 10	at Fresno State	W 3-0	25-9,25-16,25-17	1317

Record in 3-set matches: 18-2
 Record in 4-set matches: 2-1
 Record in 5-set matches: 2-0

WAC STATISTICS

RECORD:	OVERALL	HOME	AWAY	NEUTRAL
ALL GAMES	15-1	7-1	8-0	0-0
CONFERENCE	15-1	7-1	8-0	0-0
NON-CONFERENCE	0-0	0-0	0-0	0-0

#	Player	sp	Attack				Set		Serve			Dig		Blocking					points			
			k	k/s	e	ta	pct	a	a/s	sa	se	sa/s	re	dig	dig/s	bs	ba	total		blk/s	be	bhe
8	Houston, Jamie	49	200	4.08	73	433	.293	7	0.14	3	15	0.06	1	99	2.02	4	26	30	0.61	4	1	-
5	Danielson, Kanani	46	118	2.57	36	269	.305	11	0.24	3	5	0.07	6	140	3.04	3	11	14	0.30	2	0	-
13	Cubi-Otineru, Aneli	46	112	2.43	38	259	.286	9	0.20	19	27	0.41	8	104	2.26	1	20	21	0.46	1	2	-
2	Kaufman, Amber	50	104	2.08	22	211	.389	9	0.18	23	19	0.46	0	35	0.70	0	49	49	0.98	3	2	-
1	Ferrell, Stephanie	32	88	2.75	31	178	.320	1	0.03	0	2	0.00	2	19	0.59	3	5	8	0.25	0	0	-
9	Thomas, Nickie	45	82	1.82	18	173	.370	12	0.27	0	0	0.00	1	6	0.13	7	22	29	0.64	5	1	-
11	Mafua, Dani	47	22	0.47	5	49	.347	561	11.94	14	10	0.30	0	85	1.81	2	15	17	0.36	4	3	-
3	Hittle, Tara	44	12	0.27	7	36	.139	16	0.36	15	8	0.34	8	129	2.93	0	1	1	0.02	0	1	-
6	Keefe, Jessica	33	8	0.24	4	32	.125	1	0.03	0	0	0.00	1	3	0.09	0	10	10	0.30	0	0	-
16	Fowler, Catherine	11	8	0.73	6	21	.095	1	0.09	0	0	0.00	0	1	0.09	0	10	10	0.91	2	0	-
10	Brandt, Stephanie	40	3	0.08	1	5	.400	81	2.03	5	8	0.12	0	51	1.27	0	4	4	0.10	0	5	-
14	Simmons, Amanda	4	1	0.25	1	6	.000	0	0.00	0	0	0.00	0	0	0.00	0	2	2	0.50	0	0	-
18	Lee, Jayme	8	1	0.12	0	1	1.000	0	0.00	0	1	0.00	0	3	0.38	0	0	0	0.00	0	0	-
7	Ka'aihue, Elizabeth	32	1	0.03	0	2	.500	2	0.06	0	6	0.00	3	47	1.47	0	0	0	0.00	0	0	-
	TEAM	-	-	-	-	-	-	-	-	-	-	-	3	-	-	-	-	-	-	-	-	-
	HAWAII	50	760	15.20	242	1675	.309	711	14.22	82	101	1.64	33	722	14.44	20	175	107.5	2.15	21	15	-
	Opponents	50	484	9.68	276	1602	.130	445	8.90	33	100	0.66	82	552	11.04	15	124	77.0	1.54	22	8	-

Team Statistics	HAWAII	OPP
ATTACK		
Kills	760	484
Errors	242	276
Total Attacks	1675	1602
Attack Pct	.309	.130
Kills/Set	15.2	9.7
SET		
Assists	711	445
Attempts	1628	1575
Assist Pct	.437	.283
Assists/Set	14.2	8.9
SERVE		
Aces	82	33
Errors	101	100
Attempts	1220	922
Serve Pct	.917	.892
Aces/Set	1.6	0.7
SERVE RECEPTIONS		
Errors	33	82
Errors/Set	0.7	1.6
Attempts	820	1114
Reception Pct	.960	.926
DEFENSE		
Digs	722	552
Digs/Set	14.4	11.0
BLOCKING		
Block Solo	20	15
Block Assist	175	124
Total Blocks	107.5	77.0
Blocks Per Game	2.2	1.5
Block Errors	21	22
Ball handling errors	15	8
ATTENDANCE		
Total	48948	7538
Dates/Avg Per Date	8/6118	8/942
Neutral site #/Avg	0/0	
Current win streak	9	-
Home win streak	4	-

Date	Opponent	Score	Score by set	Att.
*Sep 19	IDAHO	W 3-1	27-29,25-21,25-16,25-14	6029
*Sep 20	BOISE STATE	W 3-0	25-11,25-18,29-27	6485
*Sep 25	at Louisiana Tech	W 3-0	25-11,25-20,25-16	206
*Sep 27	at New Mexico State	W 3-0	26-24,25-20,25-23	2347
*Sep 29	at San Jose State	W 3-0	25-17,25-20,25-20	738
*Oct 10	LOUISIANA TECH	W 3-0	25-15,25-19,25-9	6480
*Oct 12	NEW MEXICO STATE	L 0-3	22-25,24-26,21-25	6619
*Oct 16	at Utah State	W 3-0	25-18,25-18,25-18	756
*Oct 18	at Nevada	W 3-0	25-19,25-20,25-17	846
*Oct 24	SAN JOSE STATE	W 3-0	25-12,25-22,26-24	6188
*Oct 26	FRESNO STATE	W 3-1	25-15,19-25,25-14,25-12	5570
*Oct 31	NEVADA	W 3-0	25-12,25-23,25-16	5483
*Nov 01	UTAH STATE	W 3-0	25-19,25-14,25-13	6094
*Nov 06	at Boise State	W 3-0	25-15,25-13,25-17	273
*Nov 08	at Idaho	W 3-0	25-17,25-13,25-21	1055
*Nov 10	at Fresno State	W 3-0	25-9,25-16,25-17	1317

Record in 3-set matches: 13-1
 Record in 4-set matches: 2-0
 Record in 5-set matches: 0-0

SEASON/CAREER STATISTICS

2008 University of Hawai'i Volleyball Hawai'i Individual Season/Career Statistics (as of Nov 12, 2008) All matches

#	Player	SEASON							CAREER										
		gp	k	k/s	e	ta	pct	Set	pts/s	gp	k	k/s	e	ta	pct	Set	pts/s		
		Attack					Set				Attack					Set			
							a	a/s								a	a/s	pts/s	
8	Houston, Jamie	77	309	4.01	125	713	.258	12	0.16	-	401	1920	4.79	774	4426	.259	38	0.09	-
5	Danielson, Kanani	77	227	2.95	67	537	.298	24	0.31	-	77	227	2.95	67	537	.298	24	0.31	-
13	Cubi-Otineru, Aneli	76	182	2.39	62	430	.279	17	0.22	-	191	606	3.17	257	1517	.230	39	0.20	-
2	Kaufman, Amber	81	164	2.02	37	338	.376	19	0.23	-	257	453	1.76	158	999	.295	31	0.12	-
1	Ferrell, Stephanie	52	132	2.54	45	269	.323	3	0.06	-	56	133	2.38	47	273	.315	3	0.05	-
9	Thomas, Nickie	69	123	1.78	27	249	.386	18	0.26	-	98	166	1.69	37	348	.371	20	0.20	-
11	Mafua, Dani	78	37	0.47	6	76	.408	899	11.53	-	131	49	0.37	9	102	.392	1050	8.02	-
3	Hittle, Tara	76	17	0.22	10	49	.143	28	0.37	-	431	859	1.99	370	2408	.203	138	0.32	-
16	Fowler, Catherine	20	14	0.70	8	38	.158	1	0.05	-	20	14	0.70	8	38	.158	1	0.05	-
6	Keefe, Jessica	51	11	0.22	4	40	.175	2	0.04	-	160	124	0.77	45	372	.212	18	0.11	-
14	Simmons, Amanda	10	5	0.50	2	20	.150	3	0.30	-	26	17	0.65	16	60	.017	3	0.12	-
10	Brandt, Stephanie	66	4	0.06	1	8	.375	119	1.80	-	180	35	0.19	18	106	.160	1573	8.74	-
7	Ka'aihue, Elizabeth	35	1	0.03	0	2	.500	2	0.06	-	147	2	0.01	3	8	-.125	86	0.59	-
18	Lee, Jayme	15	1	0.07	0	1	1.000	3	0.20	-	237	7	0.03	2	10	.500	83	0.35	-
HAWAI'I		82	1227	14.96	394	2770	.301	1150	14.02	-									
Opponents		82	886	10.80	446	2705	.163	809	9.87	-									

Player	Serve			Dig		Blocking				Serve			Dig		Blocking			
	sa	sa/s	se	dig	dig/s	bs	ba	total	b/s	sa	sa/s	se	dig	dig/s	bs	ba	total	b/s
Houston, Jamie	4	0.05	20	142	1.84	9	43	52	0.68	56	0.39	134	800	5.52	52	224	276	1.90
Danielson, Kanani	7	0.09	10	240	3.12	5	28	33	0.43	7	0.09	10	240	3.12	5	28	33	0.43
Cubi-Otineru, Aneli	25	0.33	41	169	2.22	2	32	34	0.45	55	0.29	74	490	2.57	9	84	93	0.49
Kaufman, Amber	42	0.52	29	57	0.70	3	72	75	0.93	64	64.00	58	139	139.00	9	219	228	228.00
Ferrell, Stephanie	0	0.00	3	28	0.54	3	12	15	0.29	0	0.00	3	29	0.52	3	12	15	0.27
Thomas, Nickie	1	0.01	0	10	0.14	11	43	54	0.78	6	0.06	6	16	0.16	11	64	75	0.77
Mafua, Dani	17	0.22	20	155	1.99	2	20	22	0.28	17	0.13	24	178	1.36	2	28	30	0.23
Hittle, Tara	18	0.24	14	228	3.00	0	1	1	0.01	50	0.29	108	1216	6.95	6	156	162	0.93
Fowler, Catherine	0	0.00	0	5	0.25	0	16	16	0.80	0	0.00	0	5	0.25	0	16	16	0.80
Keefe, Jessica	0	0.00	0	8	0.16	0	13	13	0.25	1	0.01	0	63	0.39	4	73	77	0.48
Simmons, Amanda	0	0.00	0	1	0.10	0	6	6	0.60	2	0.08	2	4	0.15	0	11	11	0.42
Brandt, Stephanie	7	0.11	10	71	1.08	1	6	7	0.11	47	0.26	41	330	1.83	5	54	59	0.33
Ka'aihue, Elizabeth	1	0.03	6	48	1.37	0	0	0	0.00	11	0.07	28	492	3.35	0	0	0	0.00
Lee, Jayme	0	0.00	1	13	0.87	0	0	0	0.00	35	0.15	31	593	2.50	0	0	0	0.00
HAWAI'I		122	1.49	154	1175	14.33	36	292	182.0	2.22								
Opponents		51	0.62	170	942	11.49	29	241	149.5	1.82								

MATCH RESULTS

Date	Opponent		Score	Score-by-set	Overall	Conf	Time	Att.
Aug 29	#1 PENN STATE	L	0-3	21-25,19-25,19-25	0-1	0-0	1:32	7111
Aug 30	OHIO	W	3-0	25-19,25-12,25-12	1-1	0-0	1:14	5824
Aug 31	#6 UCLA	L	1-3	25-23,23-25,24-26,28-30	1-2	0-0	2:26	6552
Sep 04	#12 MINNESOTA	W	3-2	25-22,21-25,25-19,23-25,15-7	2-2	0-0	2:25	5564
Sep 05	WYOMING	W	3-0	25-15,25-10,25-18	3-2	0-0	1:24	5551
Sep 07	CINCINNATI	W	3-0	25-11,25-17,25-23	4-2	0-0	1:25	5565
Sep 11	ST. MARY'S	W	3-0	25-22,25-16,25-8	5-2	0-0	1:26	5728
Sep 12	PACIFIC	W	3-0	25-21,25-22,25-23	6-2	0-0	1:41	6184
Sep 13	#9 WASHINGTON	W	3-2	20-25,27-29,26-24,25-14,16-14	7-2	0-0	2:38	7325
* Sep 19	IDAHO	W	3-1	27-29,25-21,25-16,25-14	8-2	1-0	1:59	6029
* Sep 20	BOISE STATE	W	3-0	25-11,25-18,29-27	9-2	2-0	1:21	6485
* Sep 25	at Louisiana Tech	W	3-0	25-11,25-20,25-16	10-2	3-0	1:24	206
* Sep 27	at New Mexico State	W	3-0	26-24,25-20,25-23	11-2	4-0	1:35	2347
* Sep 29	at San Jose State	W	3-0	25-17,25-20,25-20	12-2	5-0	1:27	738
* Oct 10	LOUISIANA TECH	W	3-0	25-15,25-19,25-9	13-2	6-0	1:16	6480
* Oct 12	NEW MEXICO STATE	L	0-3	22-25,24-26,21-25	13-3	6-1	1:39	6619
* Oct 16	at Utah State	W	3-0	25-18,25-18,25-18	14-3	7-1	1:24	756
* Oct 18	at Nevada	W	3-0	25-19,25-20,25-17	15-3	8-1	1:27	846
* Oct 24	SAN JOSE STATE	W	3-0	25-12,25-22,26-24	16-3	9-1	1:27	6188
* Oct 26	FRESNO STATE	W	3-1	25-15,19-25,25-14,25-12	17-3	10-1	1:40	5570
* Oct 31	NEVADA	W	3-0	25-12,25-23,25-16	18-3	11-1	1:21	5483
* Nov 01	UTAH STATE	W	3-0	25-19,25-14,25-13	19-3	12-1	1:10	6094
* Nov 06	at Boise State	W	3-0	25-15,25-13,25-17	20-3	13-1	1:10	273
* Nov 08	at Idaho	W	3-0	25-17,25-13,25-21	21-3	14-1	1:25	1055
* Nov 10	at Fresno State	W	3-0	25-9,25-16,25-17	22-3	15-1	1:18	1317

Team Record	W-L-T	Attend	Dates	Total	Avg.
Overall:	22-3	Total:	25	111890	4476
Conference:	15-1	Home:	17	104352	6138
Home:	14-3	Away:	8	7538	942
Away:	8-0	Neutral:	0	0	0
Neutral:	0-0				
3 sets:	18-2				
4 sets:	2-1				
5 sets:	2-0				



1 ♦ STEPHANIE FERRELL

6-1 ♦ FRESHMAN ♦ OUTSIDE HITTER

LOS ANGELES, CA (LOCKE HS)

Started three matches, playing in all 25, as an outside hitter...hit .364 with 11 kills at Fresno State (Nov. 10)...hit .778 with eight kills vs. Louisiana Tech (Oct. 10)...hit .471 with 10 kills at San Jose State (Sept. 29)...had nine kills and two blocks at New Mexico State (Sept. 27)...hit .583 with eight kills and five digs at Louisiana Tech (Sept. 25)...hit .500 with five kills in two sets vs. Boise State (Sept. 20)...had nine kills vs. Washington (Sept. 13)...hit .625 with five kills in two sets vs. Pacific (Sept. 12)...hit .857 with six kills vs. St. Mary's (Sept. 11)...posted a career-high 13 kills, seven digs and three blocks vs. Wyoming (Sept. 5)...hit .300 with four kills vs. UCLA (Aug. 31)...played in four matches before earning a medical hardship for the 2007 season.

SEASON & CAREER HIGHS

13 vs. Wyoming (9/5)Kills13 vs. Wyoming (9/5/08)
 .583 at Louisiana Tech (9/25)Hitting583 at Louisiana Tech (9/25/08)
 2 vs. Wyoming (9/5)Assists2 vs. Wyoming (9/5/08)
 NA.....AcesNA
 1 (3x)Block Solos1 (2x)
 3 vs. Wyoming (9/5)Block Assists.....3 vs. Wyoming (9/5/08)
 3 vs. Wyoming (9/5)Blocks3 vs. Wyoming (9/5/08)
 7 vs. Wyoming (9/5)Digs.....7 vs. Wyoming (9/5/08)

MATCH-BY-MATCH STATISTICS

Date	Opponent	sp	attack				set			serve				recept			dig	blocking				team			
			k	e	ta	pct	a	ta	pct	sa	se	ta	pct	re	ta	pct		bs	ba	be	total	bhe	points	hit%	score
Aug 29, 2008	PENN STATE	1	2	1	3	.333	0	0	.000	0	0	0	.000	0	0	.000	0	0	0	0.0	0	-	.156	0-3	
Aug 30, 2007	OHIO	1	3	0	3	1.000	0	0	.000	0	1	2	.500	0	0	.000	0	2	0	2.0	0	-	.456	3-0	
Aug 31, 2008	UCLA	3	4	1	10	.300	0	0	.000	0	0	3	1.000	0	11	1.000	0	0	0	0.0	0	-	.229	1-3	
Sep 04, 2008	MINNESOTA	2	1	3	8	-.250	0	1	.000	0	0	0	.000	1	3	.667	0	0	0	0.0	0	-	.225	3-2	
Sep 05, 2008	WYOMING	3	13	5	33	.242	2	5	.400	0	0	5	1.000	0	4	1.000	7	0	3	3.0	0	-	.343	3-0	
Sep 07, 2008	CINCINNATI	1	1	0	2	.500	0	0	.000	0	0	0	.000	2	3	.333	0	0	0	0.0	0	-	.385	3-0	
Sep 11, 2008	ST. MARY'S	2	6	0	7	.857	0	0	.000	0	0	0	.000	0	1	1.000	0	0	1	1.0	0	-	.366	3-0	
Sep 12, 2008	PACIFIC	2	5	0	8	.625	0	2	.000	0	0	2	1.000	0	8	1.000	1	0	1	1.0	0	-	.316	3-0	
Sep 13, 2008	WASHINGTON	5	9	4	17	.294	0	1	.000	0	0	0	.000	0	9	1.000	1	0	0	0.0	0	-	.260	3-2	
Sep 19, 2008	IDAHO	1	1	4	8	-.375	0	2	.000	0	0	4	1.000	0	4	1.000	2	0	0	0.0	0	-	.325	3-1	
Sep 20, 2008	BOISE STATE	2	5	0	10	.500	0	0	.000	0	1	5	.800	1	3	.667	2	0	1	1.0	0	-	.277	3-0	
Sep 25, 2008	at Louisiana Tech	3	8	1	12	.583	0	4	.000	0	0	8	1.000	0	4	1.000	5	0	2	2.0	0	-	.317	3-0	
Sep 27, 2008	at New Mexico State	3	9	5	21	.190	0	1	.000	0	0	0	.000	0	3	1.000	0	1	1	2.0	0	-	.280	3-0	
Sep 29, 2008	at San Jose State	3	10	2	17	.471	0	0	.000	0	0	0	.000	1	2	.500	2	0	0	0.0	0	-	.317	3-0	
Oct 10, 2008	LOUISIANA TECH	2	8	1	9	.778	0	0	.000	0	0	2	1.000	0	4	1.000	3	1	0	1.0	0	-	.414	3-0	
Oct 12, 2008	NEW MEXICO STATE	3	7	3	27	.148	0	0	.000	0	0	0	.000	0	3	1.000	0	0	0	0.0	0	-	.023	0-3	
Oct 16, 2008	at Utah State	1	3	0	3	1.000	0	0	.000	0	0	0	.000	0	1	1.000	0	0	1	1.0	0	-	.337	3-0	
Oct 18, 2008	at Nevada	2	2	1	6	.167	0	0	.000	0	0	0	.000	0	2	1.000	0	0	0	0.0	0	-	.276	3-0	
Oct 24, 2008	SAN JOSE STATE	1	4	2	6	.333	0	1	.000	0	0	0	.000	0	3	1.000	0	0	0	0.0	0	-	.298	3-0	
Oct 26, 2008	FRESNO STATE	2	4	1	6	.500	1	1	1.000	0	0	3	1.000	0	1	1.000	1	0	0	0.0	0	-	.454	3-1	
Oct 31, 2008	NEVADA	2	3	3	8	.000	0	0	.000	0	0	3	1.000	0	1	1.000	1	0	0	0.0	0	-	.359	3-0	
Nov 01, 2008	UTAH STATE	1	6	0	9	.667	0	0	.000	0	1	2	.500	0	1	1.000	2	0	0	0.0	0	-	.458	3-0	
Nov 06, 2008	at Boise State	2	6	3	10	.300	0	2	.000	0	0	2	1.000	0	3	1.000	0	1	0	1.0	0	-	.352	3-0	
Nov 08, 2008	at Idaho	2	1	2	4	-.250	0	0	.000	0	0	0	.000	0	1	1.000	0	0	0	0.0	0	-	.220	3-0	
Nov 10, 2008	at Fresno State	2	11	3	22	.364	0	3	.000	0	0	1	1.000	0	4	1.000	1	0	0	0.0	0	-	.405	3-0	
		52	132	45	269	.323	3	23	.130	0	3	42	.929	5	79	.937	28	3	12	0	15.0	0	-		

Sets played: 52
 Kills per set: 2.54
 Assists per set: 0.06

Digs per set: 0.54
 Blocks per set: 0.29

CAREER STATISTICS

Season	sp-mp	k	k/s	e	ta	pct	a	a/s	sa	sa/s	se
2007	4-4	1	0.25	2	4	-.250	0	0.00	0	0.00	0
2008	52-25	132	2.54	45	269	.323	3	0.06	0	0.00	3
TOTAL	56-29	133	2.38	47	273	.315	3	0.05	0	0.00	3

Season	dig	d/s	re	bs	ba	tb	b/s	be	bhe
2007	1	0.25	0	0	0	0	0.00	0	0
2008	28	0.54	5	3	12	15	0.29	0	0
TOTAL	29	0.52	5	3	12	15	0.27	0	0



2 ♦ AMBER KAUFMAN

6-0 ♦ JUNIOR ♦ MIDDLE HITTER

SAN JOSE, CA (BRANHAM HS)

Started all 25 matches as a middle hitter...had 11 kills and five blocks while hitting .381 at Idaho (Nov. 8)...hit .429 with six kills and three aces vs. Utah State (Nov. 1)...hit .556 with 11 kills vs. Fresno State (Oct. 26)...hit .615 with nine kills at Nevada (Oct. 18)...hit .600 with 10 kills and five blocks vs. Idaho (Sept. 19)...earned all-tournament honors at the Chevron Invitational...broke the school record with 11 aces, while hitting .533 with 10 kills vs. Washington (Sept. 13)...hit .409 with 12 kills and five blocks vs. Minnesota (Sept. 4)...posted eight kills, three aces and three blocks while hitting .538 vs. Ohio (Aug. 30)...named to the WAC All-Freshman Team...two-time academic all-WAC...won the WAC Championship in the high jump in 2008...placed fifth at the NCAA Championships and 12 at the U.S. Olympic trials.

SEASON & CAREER HIGHS

12 vs. Minnesota (9/4)Kills 13 at New Mexico St. (9/22/08)
 .615 at Nevada (10/18)Hitting .727 vs. San Jose St. (11/8/07)
 2 (4x)Assists2 (5x)
 11 vs. Washington (9/13)Aces11 vs. Washington (9/13/08)
 2 vs. UCLA (8/31)Block Solos2 vs. UCLA (8/31/08)
 6 vs. New Mexico St. (10/12) Block Assists ..8 vs. Wichita St. (9/7/07)
 6 vs. New Mexico St. (10/12).....Blocks.....9 vs. Wichita St. (9/7/07)
 6 (2x)Digs8 vs. Idaho (9/14/07)

MATCH-BY-MATCH STATISTICS

Date	Opponent	sp	attack				set			serve				recept			blocking				team				
			k	e	ta	pct	a	ta	pct	sa	se	ta	pct	re	ta	pct	dig	bs	ba	be	total	bhe	points	hit%	score
Aug 29, 2008	PENN STATE	3	4	0	10	.400	1	2	.500	0	1	12	.917	0	0	.000	3	0	2	0	2.0	0	-	.156	0-3
Aug 30, 2007	OHIO	3	8	1	13	.538	1	2	.500	3	0	14	1.000	0	0	.000	1	0	3	0	3.0	0	-	.456	3-0
Aug 31, 2008	UCLA	4	6	6	21	.000	0	4	.000	1	1	21	.952	0	1	1.000	5	2	3	0	5.0	0	-	.229	1-3
Sep 04, 2008	MINNESOTA	5	12	3	22	.409	2	2	1.000	1	1	16	.938	0	1	1.000	3	1	4	1	5.0	0	-	.225	3-2
Sep 05, 2008	WYOMING	2	4	0	7	.571	2	3	.667	0	1	3	.667	0	0	.000	0	0	1	0	1.0	0	-	.343	3-0
Sep 07, 2008	CINCINNATI	3	5	2	15	.200	1	4	.250	2	1	12	.917	0	0	.000	2	0	3	0	3.0	0	-	.385	3-0
Sep 11, 2008	ST. MARY'S	3	6	0	12	.500	1	3	.333	0	2	13	.846	0	0	.000	0	0	2	0	2.0	0	-	.366	3-0
Sep 12, 2008	PACIFIC	3	5	1	12	.333	1	3	.333	1	2	15	.867	0	1	1.000	2	0	3	0	3.0	0	-	.316	3-0
Sep 13, 2008	WASHINGTON	5	10	2	15	.533	1	2	.500	11	1	35	.971	0	0	.000	6	0	2	0	2.0	0	-	.260	3-2
Sep 19, 2008	IDAHO	4	10	1	15	.600	2	4	.500	3	1	19	.947	0	0	.000	3	0	5	0	5.0	0	-	.325	3-1
Sep 20, 2008	BOISE STATE	3	5	2	15	.200	0	2	.000	1	2	14	.857	0	0	.000	6	0	2	1	2.0	0	-	.277	3-0
Sep 25, 2008	at Louisiana Tech	3	7	2	12	.417	0	2	.000	2	1	21	.952	0	0	.000	4	0	4	0	4.0	1	-	.317	3-0
Sep 27, 2008	at New Mexico State	3	8	1	16	.438	0	0	.000	0	2	16	.875	0	0	.000	2	0	0	0	0.0	0	-	.280	3-0
Sep 29, 2008	at San Jose State	3	7	1	15	.400	0	4	.000	1	0	14	1.000	0	0	.000	1	0	5	0	5.0	0	-	.317	3-0
Oct 10, 2008	LOUISIANA TECH	3	4	0	6	.667	0	3	.000	1	2	13	.846	0	0	.000	3	0	4	0	4.0	0	-	.414	3-0
Oct 12, 2008	NEW MEXICO STATE	3	3	2	11	.091	0	5	.000	1	1	18	.944	0	0	.000	2	0	6	1	6.0	0	-	.023	0-3
Oct 16, 2008	at Utah State	3	4	4	14	.000	0	0	.000	1	0	17	1.000	0	0	.000	0	0	4	0	4.0	0	-	.337	3-0
Oct 18, 2008	at Nevada	3	9	1	13	.615	2	4	.500	0	0	12	1.000	0	1	1.000	1	0	2	0	2.0	0	-	.276	3-0
Oct 24, 2008	SAN JOSE STATE	3	4	1	15	.200	2	6	.333	2	3	15	.800	0	0	.000	1	0	2	0	2.0	0	-	.298	3-0
Oct 26, 2008	FRESNO STATE	4	11	1	18	.556	0	1	.000	1	1	14	.929	0	0	.000	4	0	3	1	3.0	0	-	.454	3-1
Oct 31, 2008	NEVADA	3	5	1	10	.400	2	5	.400	2	1	13	.923	0	0	.000	2	0	3	0	3.0	1	-	.359	3-0
Nov 01, 2008	UTAH STATE	3	6	0	14	.429	0	1	.000	3	2	20	.900	0	0	.000	1	0	0	0	0.0	0	-	.458	3-0
Nov 06, 2008	at Boise State	3	4	2	8	.250	0	0	.000	3	1	17	.941	0	0	.000	3	0	1	0	1.0	0	-	.352	3-0
Nov 08, 2008	at Idaho	3	11	3	21	.381	1	3	.333	1	0	13	1.000	0	0	.000	2	0	5	0	5.0	0	-	.220	3-0
Nov 10, 2008	at Fresno State	3	6	0	8	.750	0	0	.000	1	2	10	.800	0	0	.000	0	0	3	0	3.0	0	-	.405	3-0
		81	164	37	338	.376	19	65	.292	42	29	387	.925	0	4	1.000	57	3	72	4	75.0	2	-		

Sets played: 81
 Kills per set: 2.02
 Assists per set: 0.23

Service aces per set: 0.52
 Digs per set: 0.70
 Blocks per set: 0.93

CAREER STATISTICS

Season	sp-mp	k	k/s	e	ta	pct	a	a/s	sa	sa/s	se
2006	78-26	116	1.49	51	264	.246	3	0.04	2	0.03	12
2007	98-33	173	1.77	70	397	.259	9	0.09	20	0.20	17
2008	81-25	164	2.02	37	338	.376	19	0.23	42	0.52	29
TOTAL	257-84	453	1.76	158	999	.295	31	0.12	64	0.25	58

Season	dig	d/s	re	bs	ba	tb	b/s	be	bhe
2006	23	0.29	1	1	70	71	0.91	4	1
2007	59	0.60	1	5	77	82	0.84	9	0
2008	57	0.70	0	3	72	75	0.93	4	2
TOTAL	139	0.54	2	9	219	228	0.89	17	3



3 ♦ TARA HITTLE

6-0 ♦ SENIOR ♦ LIBERO/OUTSIDE HITTER
COLORADO SPRINGS, CO (DOHERTY HS)

Started all matches thus far, 24 at libero and one as an outside hitter...posted 16 digs vs. Fresno State (Oct. 26)...had eight kills and seven digs at San Jose State (Sept. 29)...posted four aces and six digs at New Mexico State (Sept. 27)...had 13 digs at Louisiana Tech (Sept. 25)...posted 16 digs vs. Idaho (Sept. 19)...had 12 digs vs. Washington (Sept. 13)...posted 14 digs vs. St. Mary's (Sept. 11)...earned all-tournament honors in The Honolulu Advertiser Volleyball Challenge...had 16 digs vs. UCLA (Aug. 31)...posted 11 digs vs. Penn State (Aug. 29)...two-time second-team all-WAC honoree in 2005 and '07...earned a medical hardship in 2006...named WAC Freshman of the Year...three-time academic all-WAC...played on the basketball team in 2007-08.

SEASON & CAREER HIGHS

8 at San Jose St. (9/29)Kills22 at Fresno St. (9/30/04)
 .250 vs. Wyoming (9/5)Hitting706 vs. Nevada (10/5/07)
 3 (2x)Assists8 (2x)
 4 at New Mexico St. (9/27)Aces ..4 at New Mexico St. (9/27/08)
 NABlock Solos1 (6x)
 1 at San Jose St. (9/29)Block Assists6 at La. Tech (9/20/07)
 1 at San Jose St. (9/29)Blocks6 (2x)
 16 (3x)Digs..22 at New Mexico St. (9/22/07)

MATCH-BY-MATCH STATISTICS

Date	Opponent	sp	attack				set			serve				recept			dig	blocking			bhe	points	team hit% score		
			k	e	ta	pct	a	ta	pct	sa	se	ta	pct	re	ta	pct		bs	ba	be				total	
Aug 29, 2008	PENN STATE	3	0	0	0	.000	0	0	.000	0	1	9	.889	0	23	1.000	11	0	0	0	0.0	0	-	.156	0-3
Aug 30, 2007	OHIO	3	0	0	0	.000	1	2	.500	0	1	8	.875	1	17	.941	9	0	0	0	0.0	0	-	.456	3-0
Aug 31, 2008	UCLA	4	0	0	0	.000	2	6	.333	0	0	18	1.000	1	28	.964	16	0	0	0	0.0	0	-	.229	1-3
Sep 04, 2008	MINNESOTA	5	0	0	0	.000	2	6	.333	1	1	20	.950	1	33	.970	9	0	0	0	0.0	0	-	.225	3-2
Sep 05, 2008	WYOMING	3	5	2	12	.250	3	5	.600	1	1	18	.944	0	10	1.000	12	0	0	0	0.0	0	-	.343	3-0
Sep 07, 2008	CINCINNATI	3	0	0	0	.000	0	2	.000	0	1	7	.857	0	16	1.000	8	0	0	0	0.0	0	-	.385	3-0
Sep 11, 2008	ST. MARY'S	3	0	1	1	-1.000	2	3	.667	0	0	5	1.000	1	11	.909	14	0	0	0	0.0	0	-	.366	3-0
Sep 12, 2008	PACIFIC	3	0	0	0	.000	1	3	.333	0	1	7	.857	1	21	.952	8	0	0	0	0.0	0	-	.316	3-0
Sep 13, 2008	WASHINGTON	5	0	0	0	.000	1	4	.250	1	0	17	1.000	0	21	1.000	12	0	0	0	0.0	0	-	.260	3-2
Sep 19, 2008	IDAHO	4	0	0	0	.000	1	6	.167	1	1	20	.950	1	16	.938	16	0	0	0	0.0	1	-	.325	3-1
Sep 20, 2008	BOISE STATE	2	0	0	1	.000	2	4	.500	1	0	6	1.000	1	16	.938	6	0	0	0	0.0	0	-	.277	3-0
Sep 25, 2008	at Louisiana Tech	3	2	1	8	.125	1	16	.062	0	0	10	1.000	1	16	.938	13	0	0	0	0.0	0	-	.317	3-0
Sep 27, 2008	at New Mexico State	3	0	1	1	-1.000	1	21	.048	4	1	13	.923	0	32	1.000	6	0	0	0	0.0	0	-	.280	3-0
Sep 29, 2008	at San Jose State	3	8	4	23	.174	1	1	1.000	2	1	15	.933	0	18	1.000	7	0	1	0	1.0	0	-	.317	3-0
Oct 10, 2008	LOUISIANA TECH	3	0	0	0	.000	3	5	.600	1	0	11	1.000	0	11	1.000	4	0	0	0	0.0	0	-	.414	3-0
Oct 12, 2008	NEW MEXICO STATE	3	0	1	1	-1.000	1	5	.200	0	0	4	1.000	1	20	.950	5	0	0	0	0.0	0	-	.023	0-3
Oct 16, 2008	at Utah State	2	0	0	0	.000	0	1	.000	0	1	8	.875	0	19	1.000	6	0	0	0	0.0	0	-	.337	3-0
Oct 18, 2008	at Nevada	3	0	0	0	.000	2	2	1.000	2	0	10	1.000	0	19	1.000	3	0	0	0	0.0	0	-	.276	3-0
Oct 24, 2008	SAN JOSE STATE	2	0	0	0	.000	0	1	.000	0	0	4	1.000	0	10	1.000	5	0	0	0	0.0	0	-	.298	3-0
Oct 26, 2008	FRESNO STATE	4	1	0	1	1.000	2	5	.400	1	1	13	.923	2	18	.889	16	0	0	0	0.0	0	-	.454	3-1
Oct 31, 2008	NEVADA	2	0	0	0	.000	0	1	.000	1	1	8	.875	0	7	1.000	5	0	0	0	0.0	0	-	.359	3-0
Nov 01, 2008	UTAH STATE	3	0	0	0	.000	2	7	.286	1	1	11	.909	0	15	1.000	11	0	0	0	0.0	0	-	.458	3-0
Nov 06, 2008	at Boise State	2	1	0	1	1.000	0	7	.000	0	0	5	1.000	1	16	.938	11	0	0	0	0.0	0	-	.352	3-0
Nov 08, 2008	at Idaho	3	0	0	0	.000	0	3	.000	1	0	12	1.000	1	14	.929	12	0	0	0	0.0	0	-	.220	3-0
Nov 10, 2008	at Fresno State	2	0	0	0	.000	0	5	.000	0	1	6	.833	0	6	1.000	3	0	0	0	0.0	0	-	.405	3-0
		76	17	10	49	.143	28	121	.231	18	14	265	.947	13	433	.970	228	0	1	0	1.0	1	-		

Sets played: 76
 Kills per set: 0.22
 Assists per set: 0.37
 Service aces per set: 0.24
 Digs per set: 3.00
 Blocks per set: 0.01

CAREER STATISTICS

Season	sp-mp	k	k/s	e	ta	pct	a	a/s	sa	sa/s	se
2004	113-31	297	2.63	120	747	.237	73	0.65	8	0.07	28
2005	107-32	220	2.06	83	658	.208	12	0.11	13	0.12	31
2006	19-5	63	3.32	34	195	.149	9	0.47	2	0.11	5
2007	116-33	262	2.26	123	759	.183	16	0.14	9	0.08	30
2008	76-25	17	0.22	10	49	.143	28	0.37	18	0.24	14
TOTAL	431-126	859	1.99	370	2408	.203	138	0.52	50	0.12	108

Season	dig	d/s	re	bs	ba	tb	b/s	be	bhe
2004	223	1.97	12	1	60	61	0.54	9	12
2005	314	2.93	12	1	22	23	0.21	6	2
2006	68	3.58	4	1	5	6	0.32	0	1
2007	383	3.30	20	3	68	71	0.61	12	5
2008	228	3.00	13	0	1	1	0.01	0	1
TOTAL	1216	2.82	61	6	156	162	0.38	27	21



5 ♦ KANANI DANIELSON

5-10 ♦ FRESHMAN ♦ OUTSIDE HITTER

EWA BEACH, O'AHU (KAMEHAMEHA SCHOOLS)

Started 24 matches thus far this season...hit .345 with 10 kills and 12 digs at Idaho (Nov. 8)...had nine kills and 18 digs at Boise State (Nov. 6)...hit .391 with 12 kills at Utah State (Oct. 16)...had a match-high 11 digs at San Jose State (Sept. 29)...named WAC Player of the Week (Sept. 22)...had 10 kills and 15 digs vs. Boise State (Sept. 20)...hit .409 with 22 kills and 17 digs vs. Idaho (Sept. 19)...earned Chevron Rainbow Wahine Invitational all-tournament team honors...had 21 kills and 16 digs vs. Washington (Sept. 13)...hit .360 with 11 kills and 12 digs vs. St. Mary's (Sept. 11)...named the Most Outstanding Player at The Honolulu Advertiser Volleyball Challenge...hit .571 with 13 kills and nine digs vs. Cincinnati (Sept. 7)...hit .366 with 21 kills and 16 digs vs. Minnesota (Sept. 4)...had 14 kills and 18 digs vs. UCLA (Aug. 31).

SEASON & CAREER HIGHS

22 vs. Idaho (9/19)	Kills	22 vs. Idaho (9/19/08)
.571 vs. Cincinnati (9/7)	Hitting	571 vs. Cincinnati (9/7/08)
4 vs. Washington (9/13)	Assists	4 vs. Washington (9/13/08)
2 vs. Cincinnati (9/7)	Aces	2 vs. Cincinnati (9/7/08)
1 (3x)	Block Solos	1 (3x)
5 vs. Ohio (8/30)	Block Assists	5 vs. Ohio (8/30/08)
5 vs. Ohio (8/30)	Blocks	5 vs. Ohio (8/30/08)
18 (2x)	Digs	18 (2x)

MATCH-BY-MATCH STATISTICS

Date	Opponent	sp	attack				set			serve				recept			blocking				team				
			k	e	ta	pct	a	ta	pct	sa	se	ta	pct	re	ta	pct	dig	bs	ba	be	total	bhe	points	hit%	score
Aug 29, 2008	PENN STATE	3	7	5	28	.071	2	4	.500	0	1	11	.909	0	15	1.000	5	0	1	0	1.0	0	-	.156	0-3
Aug 30, 2007	OHIO	3	6	2	13	.308	1	2	.500	1	0	12	1.000	0	3	1.000	6	0	5	0	5.0	0	-	.456	3-0
Aug 31, 2008	UCLA	4	14	6	40	.200	2	3	.667	0	3	17	.824	0	23	1.000	18	0	1	0	1.0	0	-	.229	1-3
Sep 04, 2008	MINNESOTA	5	21	6	41	.366	1	11	.091	0	1	13	.923	0	23	1.000	16	1	1	1	2.0	0	-	.225	3-2
Sep 05, 2008	WYOMING	2	7	1	15	.400	1	1	1.000	0	0	10	1.000	0	5	1.000	6	0	0	2	0.0	0	-	.343	3-0
Sep 07, 2008	CINCINNATI	3	13	1	21	.571	0	0	.000	2	0	13	1.000	0	11	1.000	9	0	1	1	1.0	0	-	.385	3-0
Sep 11, 2008	ST. MARY'S	3	11	2	25	.360	2	2	1.000	1	0	10	1.000	0	15	1.000	12	0	2	1	2.0	0	-	.366	3-0
Sep 12, 2008	PACIFIC	3	9	2	23	.304	0	2	.000	0	0	8	1.000	1	21	.952	12	0	3	0	3.0	0	-	.316	3-0
Sep 13, 2008	WASHINGTON	5	21	6	62	.242	4	8	.500	0	0	12	1.000	0	30	1.000	16	1	3	0	4.0	0	-	.260	3-2
Sep 19, 2008	IDAHO	4	22	4	44	.409	3	5	.600	0	0	11	1.000	0	28	1.000	17	0	2	0	2.0	0	-	.325	3-1
Sep 20, 2008	BOISE STATE	3	10	4	22	.273	1	3	.333	0	0	11	1.000	1	8	.875	15	1	1	0	2.0	0	-	.277	3-0
Sep 27, 2008	at New Mexico State	3	0	0	0	.000	4	13	.308	0	0	11	1.000	0	11	1.000	5	0	0	0	0.0	0	-	.280	3-0
Sep 29, 2008	at San Jose State	3	0	0	0	.000	0	1	.000	0	0	5	1.000	0	12	1.000	11	0	0	0	0.0	0	-	.317	3-0
Oct 10, 2008	LOUISIANA TECH	2	1	0	4	.250	0	0	.000	0	1	2	.500	0	4	1.000	1	0	0	0	0.0	0	-	.414	3-0
Oct 12, 2008	NEW MEXICO STATE	3	1	2	6	-.167	0	4	.000	0	0	9	1.000	0	10	1.000	6	0	0	0	0.0	0	-	.023	0-3
Oct 16, 2008	at Utah State	3	12	3	23	.391	0	2	.000	1	0	8	1.000	1	6	.833	3	0	3	0	3.0	0	-	.337	3-0
Oct 18, 2008	at Nevada	3	9	4	20	.250	0	1	.000	1	1	15	.933	2	18	.889	7	0	2	1	2.0	0	-	.276	3-0
Oct 24, 2008	SAN JOSE STATE	3	12	3	24	.375	0	1	.000	0	0	7	1.000	1	12	.917	7	0	1	1	1.0	0	-	.298	3-0
Oct 26, 2008	FRESNO STATE	4	13	4	29	.310	0	4	.000	0	0	8	1.000	1	12	.917	9	0	1	0	1.0	0	-	.454	3-1
Oct 31, 2008	NEVADA	3	6	4	16	.125	0	2	.000	0	1	8	.875	0	13	1.000	9	1	0	0	1.0	0	-	.359	3-0
Nov 01, 2008	UTAH STATE	3	7	3	15	.267	1	3	.333	0	1	12	.917	0	11	1.000	12	0	1	0	1.0	0	-	.458	3-0
Nov 06, 2008	at Boise State	3	9	5	26	.154	1	8	.125	1	0	15	1.000	0	2	1.000	18	0	0	0	0.0	0	-	.352	3-0
Nov 08, 2008	at Idaho	3	10	0	29	.345	1	2	.500	0	0	13	1.000	0	10	1.000	12	1	0	0	1.0	0	-	.220	3-0
Nov 10, 2008	at Fresno State	3	6	0	11	.545	0	6	.000	0	1	7	.857	0	10	1.000	8	0	0	0	0.0	0	-	.405	3-0
Totals		77	227	67	537	.298	24	88	.273	7	10	248	.960	7	313	.978	240	5	28	7	33.0	0	-		

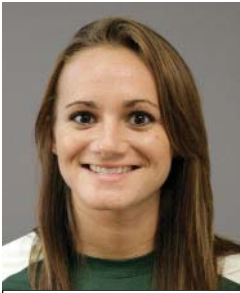
Sets played: 77
Kills per set: 2.95
Assists per set: 0.31

Service aces per set: 0.09
Digs per set: 3.12
Blocks per set: 0.43

CAREER STATISTICS

Season	sp-mp	k	k/s	e	ta	pct	a	a/s	sa	sa/s	se
2008	77-24	227	2.95	67	537	.298	24	0.31	7	0.09	10
TOTAL	77-24	227	2.95	67	537	.298	24	0.31	7	0.09	10

Season	dig	d/s	re	bs	ba	tb	b/s	be	bhe
2008	240	3.12	7	5	28	33	0.43	7	0
TOTAL	240	3.12	7	5	28	33	0.43	7	0



6 ♦ JESSICA KEEFE

6-2 ♦ SENIOR ♦ OUTSIDE HITTER

AMES, IA (AMES HS)

Played in all 25 matches thus far as an outside hitter...had two kills in one set vs. Nevada (Oct. 31)...had a kill and a block vs. New Mexico State (Oct. 12)...posted three blocks vs. Louisiana Tech (Oct. 10)...hit .333 with two kills vs. Boise State (Sept. 20)...had two blocks and three digs vs. Idaho (Sept. 19)...had one block vs. Washington (Sept. 13)...hit .500 with three kills and a block vs. Wyoming (Sept. 5)...played in 27 matches in 2007...started three matches, playing in 17 in 2006...played in 16 matches in 2005...redshirted the 2004 season...two-time academic all-WAC.

SEASON & CAREER HIGHS

3 vs. Wyoming (9/5)Kills.....11 vs. Pepperdine (8/25/06)
 .500 vs. Wyoming (9/5)Hitting ...471 vs. Fresno St. (9/23/06)
 1 vs. Minnesota (9/4)Assists4 vs. Cal Poly (9/14/06)
 NA.....Aces1 at Utah St. (10/15/07)
 NABlock Solos1 (4x)
 3 vs. Louisiana Tech (10/10) ..Block Assists 7 vs. Pepperdine (8/26/06)
 3 vs. Louisiana Tech (10/10)Blocks7 (2x)
 3 vs. Idaho (9/19)Digs7 vs. Pepperdine (8/26/06)

MATCH-BY-MATCH STATISTICS

Date	Opponent	sp	attack			set			serve				recept			dig	blocking				bhe	points	hit%	team score	
			k	e	ta	pct	a	ta	pct	sa	se	ta	pct	re	ta		pct	bs	ba	be					total
Aug 29, 2008	PENN STATE	1	0	0	0	.000	0	0	.000	0	0	0	.000	0	0	.000	0	0	0	0.0	0	-	.156	0-3	
Aug 30, 2007	OHIO	1	0	0	1	.000	0	0	.000	0	0	0	.000	0	0	.000	0	1	0	1.0	0	-	.456	3-0	
Aug 31, 2008	UCLA	2	0	0	0	.000	0	0	.000	0	0	0	.000	0	0	.000	0	0	0	0.0	0	-	.229	1-3	
Sep 04, 2008	MINNESOTA	3	0	0	0	.000	1	1	1.000	0	0	0	.000	0	0	.000	1	0	0	0.0	0	-	.225	3-2	
Sep 05, 2008	WYOMING	2	3	0	6	.500	0	1	.000	0	0	4	1.000	0	0	.000	1	0	1	1.0	0	-	.343	3-0	
Sep 07, 2008	CINCINNATI	1	0	0	1	.000	0	0	.000	0	0	0	.000	0	0	.000	1	0	0	0.0	0	-	.385	3-0	
Sep 11, 2008	ST. MARY'S	2	0	0	0	.000	0	1	.000	0	0	1	1.000	0	0	.000	2	0	0	0.0	0	-	.366	3-0	
Sep 12, 2008	PACIFIC	2	0	0	0	.000	0	0	.000	0	0	0	.000	0	0	.000	0	0	0	0.0	0	-	.316	3-0	
Sep 13, 2008	WASHINGTON	4	0	0	0	.000	0	0	.000	0	0	0	.000	0	0	.000	0	0	1	1.0	0	-	.260	3-2	
Sep 19, 2008	IDAHO	4	0	1	2	-.500	0	1	.000	0	0	1	1.000	0	1	1.000	3	0	2	2.0	0	-	.325	3-1	
Sep 20, 2008	BOISE STATE	2	2	0	6	.333	0	0	.000	0	0	0	.000	0	0	.000	0	0	1	1.0	0	-	.277	3-0	
Sep 25, 2008	at Louisiana Tech	2	1	1	8	.000	0	0	.000	0	0	0	.000	0	0	.000	0	0	0	0.0	0	-	.317	3-0	
Sep 27, 2008	at New Mexico State	3	0	0	0	.000	0	0	.000	0	0	0	.000	0	0	.000	0	0	0	0.0	0	-	.280	3-0	
Sep 29, 2008	at San Jose State	1	0	0	0	.000	0	0	.000	0	0	0	.000	0	0	.000	0	0	0	0.0	0	-	.317	3-0	
Oct 10, 2008	LOUISIANA TECH	2	1	0	4	.250	0	0	.000	0	0	0	.000	0	0	.000	0	3	0	3.0	0	-	.414	3-0	
Oct 12, 2008	NEW MEXICO STATE	3	1	0	2	.500	0	0	.000	0	0	0	.000	0	0	.000	0	0	1	1.0	0	-	.023	0-3	
Oct 16, 2008	at Utah State	3	0	0	0	.000	0	0	.000	0	0	0	.000	0	0	.000	0	0	1	1.0	0	-	.337	3-0	
Oct 18, 2008	at Nevada	2	0	0	0	.000	0	0	.000	0	0	0	.000	0	0	.000	0	0	1	1.0	0	-	.276	3-0	
Oct 24, 2008	SAN JOSE STATE	2	1	0	1	1.000	0	0	.000	0	0	1	1.000	0	1	1.000	0	0	0	0.0	0	-	.298	3-0	
Oct 26, 2008	FRESNO STATE	1	0	0	0	.000	0	0	.000	0	0	0	.000	0	0	.000	0	0	1	1.0	0	-	.454	3-1	
Oct 31, 2008	NEVADA	1	2	1	4	.250	0	0	.000	0	0	0	.000	0	0	.000	0	0	0	0.0	0	-	.359	3-0	
Nov 01, 2008	UTAH STATE	2	0	0	0	.000	0	0	.000	0	0	0	.000	0	0	.000	0	0	0	0.0	0	-	.458	3-0	
Nov 06, 2008	at Boise State	3	0	0	1	1.000	1	1	1.000	0	0	0	.000	1	2	.500	0	0	0	0.0	0	-	.352	3-0	
Nov 08, 2008	at Idaho	1	0	0	0	.000	0	0	.000	0	0	0	.000	0	0	.000	0	0	0	0.0	0	-	.220	3-0	
Nov 10, 2008	at Fresno State	1	0	1	4	-.250	0	0	.000	0	0	0	.000	0	0	.000	0	0	0	0.0	0	-	.405	3-0	
		51	11	4	40	.175	2	5	.400	0	0	7	1.000	1	4	.750	8	0	13	0	13.0	0	-		

Sets played: 51
 Kills per set: 0.22
 Assists per set: 0.04

Digs per set: 0.16
 Blocks per set: 0.25

CAREER STATISTICS

Season	sp-mp	k	k/s	e	ta	pct	a	a/s	sa	sa/s	se
2004	0-0	0	0.00	0	0	.000	0	0.00	0	0.00	0
2005	22-17	18	0.82	5	54	.241	4	0.18	0	0.00	0
2006	52-17	72	1.38	27	212	.212	7	0.13	0	0.00	0
2007	35-27	23	0.66	9	66	.212	5	0.14	1	0.03	0
2008	51-25	11	0.22	4	40	.175	2	0.04	0	0.00	0
TOTAL	160-86	124	0.77	45	372	.212	18	0.11	1	0.01	0

Season	dig	d/s	re	bs	ba	tb	b/s	be	bhe
2004	0	0.00	0	0	0	0	0.00	0	0
2005	5	0.23	1	2	12	14	0.64	1	1
2006	31	0.60	2	1	42	43	0.83	6	3
2007	19	0.54	1	1	6	7	0.20	0	0
2008	8	0.16	1	0	13	13	0.25	0	0
TOTAL	63	0.39	5	4	73	77	0.48	7	4



7 ♦ ELIZABETH KA'AIHUE

5-8 ♦ SOPHOMORE ♦ LIBERO

KAILUA, O'AHU (PUNAHOU SCHOOL)

Played in 18 matches this season, starting one at libero...had a season-high 12 digs at Fresno State (Nov. 10)...had three digs vs. Nevada (Oct. 31)...had four digs vs. San Jose State (Oct. 24)...posted 10 digs at San Jose State (Sept. 29)...had six digs at Louisiana Tech (Sept. 25)...had two digs vs. Boise State (Sept. 20)...recorded a dig and an ace vs. St. Mary's (Sept. 11)...played in all 33 matches in 2007, starting 31 as the libero...earned WAC all-freshman team honors...broke the school record for digs in a four-set match with 31 vs. Louisville (Sept. 2)...academic all-WAC.

SEASON & CAREER HIGHS

1 at San Jose St. (9/29)Kills.....1 (2x)
 1.000 at San Jose St. (9/29).....Hitting.....1.000 (2x)
 1 at San Jose St. (9/29)Assists8 vs. Michigan (8/24/07)
 1 vs. St. Mary's (9/11).....Aces..2 vs. Middle Tennessee (12/1/07)
 NABlock SolosNA
 NABlock AssistsNA
 NABlocksNA
 12 at Fresno St. (11/10)Digs.....31 vs. Louisville (9/2/07)

MATCH-BY-MATCH STATISTICS

Date	Opponent	sp	attack			set			serve				recept			dig	blocking				team				
			k	e	ta	pct	a	ta	pct	sa	se	ta	pct	re	ta		pct	bs	ba	be	total	bhe	points	hit%	score
Sep 11, 2008	ST. MARY'S	2	0	0	0	.000	0	0	.000	1	0	4	1.000	1	3	.667	1	0	0	0	0.0	0	-	.366	3-0
Sep 12, 2008	PACIFIC	1	0	0	0	.000	0	1	.000	0	0	2	1.000	0	2	1.000	0	0	0	0	0.0	0	-	.316	3-0
Sep 19, 2008	IDAHO	3	0	0	0	.000	0	0	.000	0	0	2	1.000	0	0	.000	0	0	0	0	0.0	0	-	.325	3-1
Sep 20, 2008	BOISE STATE	2	0	0	0	.000	0	1	.000	0	0	4	1.000	0	12	1.000	2	0	0	0	0.0	0	-	.277	3-0
Sep 25, 2008	at Louisiana Tech	3	0	0	0	.000	0	10	.000	0	0	5	1.000	0	12	1.000	6	0	0	0	0.0	0	-	.317	3-0
Sep 27, 2008	at New Mexico State	1	0	0	0	.000	0	0	.000	0	0	0	.000	0	1	1.000	0	0	0	0	0.0	0	-	.280	3-0
Sep 29, 2008	at San Jose State	3	1	0	1	1.000	1	3	.333	0	1	12	.917	1	13	.923	10	0	0	0	0.0	0	-	.317	3-0
Oct 10, 2008	LOUISIANA TECH	2	0	0	0	.000	0	0	.000	0	0	3	1.000	0	2	1.000	3	0	0	0	0.0	0	-	.414	3-0
Oct 12, 2008	NEW MEXICO STATE	2	0	0	0	.000	0	3	.000	0	1	2	.500	0	13	1.000	3	0	0	0	0.0	0	-	.023	0-3
Oct 16, 2008	at Utah State	1	0	0	0	.000	0	0	.000	0	0	3	1.000	0	10	1.000	2	0	0	0	0.0	0	-	.337	3-0
Oct 18, 2008	at Nevada	1	0	0	0	.000	0	0	.000	0	0	2	1.000	0	2	1.000	0	0	0	0	0.0	0	-	.276	3-0
Oct 24, 2008	SAN JOSE STATE	2	0	0	0	.000	0	0	.000	0	1	3	.667	1	12	.917	4	0	0	0	0.0	0	-	.298	3-0
Oct 26, 2008	FRESNO STATE	3	0	0	0	.000	0	0	.000	0	0	0	.000	0	3	1.000	1	0	0	0	0.0	0	-	.454	3-1
Oct 31, 2008	NEVADA	2	0	0	0	.000	0	1	.000	0	1	3	.667	0	9	1.000	3	0	0	0	0.0	0	-	.359	3-0
Nov 01, 2008	UTAH STATE	2	0	0	0	.000	0	0	.000	0	1	4	.750	0	2	1.000	0	0	0	0	0.0	0	-	.458	3-0
Nov 06, 2008	at Boise State	2	0	0	0	.000	0	3	.000	0	0	6	1.000	1	8	.875	1	0	0	0	0.0	0	-	.352	3-0
Nov 08, 2008	at Idaho	1	0	0	0	.000	0	0	.000	0	0	3	1.000	0	0	.000	0	0	0	0	0.0	0	-	.220	3-0
Nov 10, 2008	at Fresno State	2	0	0	1	1.000	1	9	.111	0	1	5	.800	0	5	1.000	12	0	0	0	0.0	0	-	.405	3-0
Totals		35	1	0	2	.500	2	31	.065	1	6	63	.905	4	109	.963	48	0	0	0	0.0	0	-	-	

Sets played: 35
 Kills per set: 0.03
 Assists per set: 0.06

Service aces per set: 0.03
 Digs per set: 1.37

CAREER STATISTICS

Season	sp-mp	k	k/s	e	ta	pct	a	a/s	sa	sa/s	se
2007	112-33	1	0.01	3	6	-.333	84	0.75	10	0.09	22
2008	35-18	1	0.03	0	2	.500	2	0.06	1	0.03	6
TOTAL	147-51	2	0.01	3	8	-.125	86	0.59	11	0.07	28

Season	dig	d/s	re	bs	ba	tb	b/s	be	bhe
2007	444	3.96	21	0	0	0	0.00	0	6
2008	48	1.37	4	0	0	0	0.00	0	0
TOTAL	492	3.35	25	0	0	0	0.00	0	6



8 ♦ JAMIE HOUSTON

6-1 ♦ SENIOR ♦ OUTSIDE HITTER

HUNTSVILLE, AL (HUNTSVILLE HS)

Started 24 matches as an outside hitter...hit .556 with 11 kills at Boise State (Nov. 6)...hit .500 with 13 kills vs. Utah State (Nov. 1)...hit .607 with 19 kills and eight digs vs. Nevada (Oct. 31)...hit .526 with 12 kills and 11 digs vs. Fresno State (Oct. 26)...earned WAC Player of the Week on Sept. 29...hit .341 with 21 kills at Louisiana Tech (Sept. 25)...hit .317 with 20 kills and six digs vs. Idaho (Sept. 19)...named Chevron Invitational MOP while earning WAC Player of the Week (Sept. 15)...had 27 kills vs. Washington (Sept. 13)...had 18 kills, 15 digs and five blocks vs. UCLA (Aug. 31)...named WAC Player of the Year in 2007...AVCA All-America third team in 2006...two-time AVCA All-West Region (2006, '07)...two-time first-team all-WAC (2006, '07)...named to the all-WAC second and freshman teams in 2005.

SEASON & CAREER HIGHS

27 vs. Washington (9/13)Kills35 vs. USC (12/8/06)
 .607 vs. Nevada (10/31)Hitting .632 vs. CS Northridge (9/9/05)
 2 vs. Washington (9/13)Assists2 (5x)
 2 at Nevada (10/18)Aces 4 vs. New Mexico St. (11/24/06)
 2 (2x)Block Solos3 (4x)
 6 vs. Pacific (9/12)Block Assists6 (3x)
 6 vs Pacific (9/12)Blocks9 vs. Oregon (12/1/06)
 15 vs. UCLA (8/31)Digs ..23 vs. San Jose St. (10/29/06)

MATCH-BY-MATCH STATISTICS

Date	Opponent	sp	attack				set			serve				recept			dig	blocking				bhe	points	team hit%	score
			k	e	ta	pct	a	ta	pct	sa	se	ta	pct	re	ta	pct		bs	ba	be	total				
Aug 29, 2008	PENN STATE	3	8	9	26	-.038	0	2	.000	0	1	5	.800	0	4	1.000	5	1	0	0	1.0	0	-	.156	0-3
Aug 30, 2007	OHIO	2	5	3	12	.167	1	2	.500	0	0	2	1.000	0	3	1.000	2	0	2	0	2.0	0	-	.456	3-0
Aug 31, 2008	UCLA	4	18	10	46	.174	0	2	.000	0	2	5	.600	0	5	1.000	15	2	3	0	5.0	0	-	.229	1-3
Sep 04, 2008	MINNESOTA	5	15	10	43	.116	1	2	.500	0	1	6	.833	1	5	.800	8	0	3	2	3.0	0	-	.225	3-2
Sep 07, 2008	CINCINNATI	3	12	1	30	.367	1	3	.333	0	0	8	1.000	0	2	1.000	3	1	1	0	2.0	0	-	.385	3-0
Sep 11, 2008	ST. MARY'S	3	8	3	26	.192	0	1	.000	0	1	12	.917	0	7	1.000	5	1	2	0	3.0	0	-	.366	3-0
Sep 12, 2008	PACIFIC	3	16	5	40	.275	0	2	.000	1	0	7	1.000	0	1	1.000	3	0	6	0	6.0	1	-	.316	3-0
Sep 13, 2008	WASHINGTON	5	27	11	57	.281	2	3	.667	0	0	7	1.000	0	4	1.000	2	0	0	0	0.0	0	-	.260	3-2
Sep 19, 2008	IDAHO	4	20	7	41	.317	1	3	.333	0	2	5	.600	0	7	1.000	6	0	2	0	2.0	0	-	.325	3-1
Sep 20, 2008	BOISE STATE	2	9	5	21	.190	1	1	1.000	0	0	6	1.000	0	0	.000	3	0	0	0	0.0	0	-	.277	3-0
Sep 25, 2008	at Louisiana Tech	3	21	7	41	.341	0	4	.000	0	2	8	.750	0	2	1.000	11	0	2	0	2.0	0	-	.317	3-0
Sep 27, 2008	at New Mexico State	3	16	6	37	.270	0	2	.000	0	1	6	.833	0	4	1.000	3	0	0	0	0.0	0	-	.280	3-0
Sep 29, 2008	at San Jose State	3	9	5	27	.148	1	3	.333	0	1	5	.800	0	1	1.000	4	0	1	2	1.0	0	-	.317	3-0
Oct 10, 2008	LOUISIANA TECH	3	10	4	20	.300	0	1	.000	0	2	5	.600	0	0	.000	0	0	1	0	1.0	0	-	.414	3-0
Oct 12, 2008	NEW MEXICO STATE	3	11	7	41	.098	0	1	.000	0	0	4	1.000	0	4	1.000	6	0	4	0	4.0	0	-	.023	0-3
Oct 16, 2008	at Utah State	3	12	3	23	.391	1	2	.500	0	1	6	.833	1	4	.750	8	0	3	0	3.0	1	-	.337	3-0
Oct 18, 2008	at Nevada	3	5	6	21	-.048	1	2	.500	2	0	10	1.000	0	1	1.000	5	0	5	0	5.0	0	-	.276	3-0
Oct 24, 2008	SAN JOSE STATE	3	18	8	35	.286	0	1	.000	1	1	9	.889	0	1	1.000	12	1	0	0	1.0	0	-	.298	3-0
Oct 26, 2008	FRESNO STATE	4	12	2	19	.526	0	5	.000	0	2	14	.857	0	2	1.000	11	0	2	2	2.0	0	-	.454	3-1
Oct 31, 2008	NEVADA	3	19	2	28	.607	0	1	.000	0	1	4	.750	0	1	1.000	8	0	2	0	2.0	0	-	.359	3-0
Nov 01, 2008	UTAH STATE	3	13	2	22	.500	0	0	.000	0	1	7	.857	0	2	1.000	7	0	0	0	0.0	0	-	.458	3-0
Nov 06, 2008	at Boise State	3	11	1	18	.556	1	9	.111	0	0	7	1.000	0	0	.000	7	0	1	0	1.0	0	-	.352	3-0
Nov 08, 2008	at Idaho	3	5	6	23	-.043	0	0	.000	0	0	4	1.000	0	3	1.000	5	2	2	0	4.0	0	-	.220	3-0
Nov 10, 2008	at Fresno State	3	9	2	16	.438	1	3	.333	0	1	10	.900	0	1	1.000	3	1	1	0	2.0	0	-	.405	3-0
Totals		77	309	125	713	.258	12	55	.218	4	20	162	.877	2	64	.969	142	9	43	6	52.0	2	-		

Sets played: 77
 Kills per set: 4.01
 Assists per set: 0.16

Service aces per set: 0.05
 Digs per set: 1.84
 Blocks per set: 0.68

CAREER STATISTICS

Season	sp-mp	k	k/s	e	ta	pct	a	a/s	sa	sa/s	se
2005	89-33	318	3.57	117	735	.273	1	0.01	4	0.04	12
2006	122-34	670	5.49	277	1560	.252	7	0.06	33	0.27	57
2007	113-33	623	5.51	255	1418	.260	18	0.16	15	0.13	45
2008	77-24	309	4.01	125	713	.258	12	0.16	4	0.05	20
TOTAL	401-124	1920	4.79	774	4426	.259	38	0.09	56	0.14	134

Season	dig	d/s	re	bs	ba	tb	b/s	be	bhe
2005	56	0.63	2	6	42	48	0.54	12	2
2006	313	2.57	24	19	70	89	0.73	26	3
2007	289	2.56	4	18	69	87	0.77	21	3
2008	142	1.84	2	9	43	52	0.68	6	2
TOTAL	800	2.00	32	52	224	276	0.69	65	10



9 ♦ NICKIE THOMAS

6-3 ♦ SENIOR ♦ MIDDLE HITTER

AUSTIN, TX (WESTWOOD HS)

Started 23 matches, playing 24 as a middle hitter...hit .625 with six kills vs. Utah State (Nov. 1)...hit .538 with seven kills and eight blocks vs. Fresno State (Oct. 26)...had seven kills and a .400 hitting percentage at San Jose State (Sept. 29)...hit .438 with eight kills at New Mexico State (Sept. 27)...hit .409 with 10 kills vs. Idaho (Sept. 19)...hit .385 with seven kills and six blocks vs. Pacific (Sept. 12)...hit .600 with six kills and five blocks vs. St. Mary's (Sept. 11)...hit .526 with 13 kills vs. UCLA (Aug. 31)...had five kills, four blocks and a .714 hitting percentage vs. Ohio (Aug. 30)...missed the 2007 season due to injury...missed much of the 2006 season due to injury after playing in five matches...played in 15 matches in 2005...redshirted the 2004 season.

SEASON & CAREER HIGHS

13 vs. UCLA (8/31)Kills.....13 vs. UCLA (8/31/08)
 .600 vs. St. Mary's (9/11).....Hitting ...600 vs. St. Mary's (9/11/08)
 4 at Fresno St. (11/10)Assists4 at Fresno St. (11/10/08)
 1 vs. Wyoming (9/5)Aces5 vs. Northwestern (9/8/06)
 3 vs. Fresno St. (10/26)Block Solos ..3 vs. Fresno St. (10/26/08)
 6 (2x).....Block Assists.....6 (2x)
 8 vs. Fresno St. (10/26)Blocks.....8 vs. Fresno St. (10/26/08)
 2 at Nevada (10/18)Digs2 at Nevada (10/18/08)

MATCH-BY-MATCH STATISTICS

Date	Opponent	sp	attack			set			serve				recept			dig	blocking				team				
			k	e	ta	pct	a	ta	pct	sa	se	ta	pct	re	ta		pct	bs	ba	be	total	bhe	points	hit%	score
Aug 30, 2007	OHIO	2	5	0	7	.714	0	0	.000	0	0	0	.000	0	0	.000	0	1	3	1	4.0	0	-	.456	3-0
Aug 31, 2008	UCLA	4	13	3	19	.526	2	5	.400	0	0	0	.000	0	0	.000	0	0	2	0	2.0	0	-	.229	1-3
Sep 04, 2008	MINNESOTA	3	1	2	10	-.100	0	1	.000	0	0	0	.000	0	0	.000	1	0	0	0	0.0	0	-	.225	3-2
Sep 05, 2008	WYOMING	1	3	0	5	.600	0	1	.000	1	0	4	1.000	0	0	.000	1	0	2	0	2.0	0	-	.343	3-0
Sep 07, 2008	CINCINNATI	3	3	1	5	.400	2	4	.500	0	0	0	.000	0	0	.000	0	1	1	0	2.0	0	-	.385	3-0
Sep 11, 2008	ST. MARY'S	3	6	0	10	.600	1	4	.250	0	0	0	.000	0	0	.000	0	1	4	0	5.0	0	-	.366	3-0
Sep 12, 2008	PACIFIC	3	7	2	13	.385	0	0	.000	0	0	0	.000	0	0	.000	1	0	6	0	6.0	0	-	.316	3-0
Sep 13, 2008	WASHINGTON	5	3	1	7	.286	1	6	.167	0	0	0	.000	0	0	.000	1	1	3	0	4.0	0	-	.260	3-2
Sep 19, 2008	IDAHO	4	10	1	22	.409	0	2	.000	0	0	0	.000	1	1	.000	0	0	1	0	1.0	0	-	.325	3-1
Sep 20, 2008	BOISE STATE	2	4	1	8	.375	2	3	.667	0	0	0	.000	0	0	.000	0	1	0	1	1.0	0	-	.277	3-0
Sep 25, 2008	at Louisiana Tech	2	3	1	8	.250	1	1	1.000	0	0	0	.000	0	1	1.000	0	1	2	1	3.0	0	-	.317	3-0
Sep 27, 2008	at New Mexico State	3	8	1	16	.438	1	1	1.000	0	0	0	.000	0	0	.000	0	0	1	0	1.0	0	-	.280	3-0
Sep 29, 2008	at San Jose State	3	7	1	15	.400	1	4	.250	0	0	0	.000	0	0	.000	0	0	0	1	0.0	0	-	.317	3-0
Oct 10, 2008	LOUISIANA TECH	2	4	2	11	.182	0	2	.000	0	0	0	.000	0	0	.000	0	0	0	0	0.0	0	-	.414	3-0
Oct 12, 2008	NEW MEXICO STATE	3	2	2	9	.000	0	4	.000	0	0	0	.000	0	0	.000	1	0	1	0	1.0	0	-	.023	0-3
Oct 16, 2008	at Utah State	2	3	1	6	.333	0	3	.000	0	0	0	.000	0	0	.000	0	0	2	0	2.0	0	-	.337	3-0
Oct 18, 2008	at Nevada	3	4	0	7	.571	1	2	.500	0	0	0	.000	0	0	.000	2	0	6	0	6.0	0	-	.276	3-0
Oct 24, 2008	SAN JOSE STATE	2	5	0	7	.714	1	6	.167	0	0	0	.000	0	0	.000	0	0	0	0	0.0	1	-	.298	3-0
Oct 26, 2008	FRESNO STATE	4	7	0	13	.538	0	2	.000	0	0	0	.000	0	0	.000	0	3	5	1	8.0	0	-	.454	3-1
Oct 31, 2008	NEVADA	3	4	2	11	.182	1	3	.333	0	0	0	.000	0	0	.000	0	0	0	1	0.0	0	-	.359	3-0
Nov 01, 2008	UTAH STATE	3	6	1	8	.625	0	1	.000	0	0	0	.000	0	0	.000	1	0	1	0	1.0	0	-	.458	3-0
Nov 06, 2008	at Boise State	3	5	2	10	.300	0	0	.000	0	0	0	.000	0	0	.000	0	1	2	0	3.0	0	-	.352	3-0
Nov 08, 2008	at Idaho	3	5	3	14	.143	0	3	.000	0	0	0	.000	0	0	.000	1	1	1	0	2.0	0	-	.220	3-0
Nov 10, 2008	at Fresno State	3	5	0	8	.625	4	5	.800	0	0	0	.000	0	0	.000	1	0	0	0	0.0	0	-	.405	3-0
Totals		69	123	27	249	.386	18	63	.286	1	0	4	1.000	1	2	.500	10	11	43	6	54.0	1	-		

Sets played: 69
 Kills per set: 1.78
 Assists per set: 0.26

Service aces per set: 0.01
 Digs per set: 0.14
 Blocks per set: 0.78

CAREER STATISTICS

Season	sp-mp	k	k/s	e	ta	pct	a	a/s	sa	sa/s	se
2004	0-0	0	0.00	0	0	.000	0	0.00	0	0.00	0
2005	18-15	16	0.89	4	39	.308	2	0.11	0	0.00	0
2006	11-5	27	2.45	6	60	.350	0	0.00	5	0.45	6
2007	0-0	0	0.00	0	0	.000	0	0.00	0	0.00	0
2008	69-24	123	1.78	27	249	.386	18	0.26	1	0.01	0
TOTAL	98-44	166	1.69	37	348	.371	20	0.20	6	0.06	6

Season	dig	d/s	re	bs	ba	tb	b/s	be	bhe
2004	0	0.00	0	0	0	0	0.00	0	0
2005	4	0.22	0	0	14	14	0.78	0	0
2006	2	0.18	1	0	7	7	0.64	0	1
2007	0	0.00	0	0	0	0	0.00	0	0
2008	10	0.14	1	11	43	54	0.78	6	1
TOTAL	16	0.16	2	11	64	75	0.77	6	2



10 ♦ STEPHANIE BRANDT

5-9 ♦ JUNIOR ♦ SETTER

IRVINE, CA (UC SANTA BARBARA)

Played in all 25 matches as a setter and backrow specialist, starting one...had eight digs at Boise State (Nov. 8)...had seven digs and three assists at Nevada (Oct. 18)...had 38 assists, 10 digs, three blocks and three kills in her start at San Jose State (Sept. 29)...had 10 assists at Louisiana Tech (Sept. 25)...posted five assists and five digs with one ace vs. Idaho (Sept. 19)...had four digs vs. Washington (Sept. 13)...also had four digs vs. Pacific (Sept. 12)...posted nine assists, and ace and two digs vs. St. Mary's (Sept.11)...had 12 assists, three digs and two blocks vs. Wyoming (Sept. 5)...played in all 33 matches, starting 32 at setter...earned second-team all-WAC honors...academic all-WAC...transferred from UC Santa Barabara, where she started as a freshman in 2006.

SEASON & CAREER HIGHS

3 at San Jose St. (9/25).....Kills4 vs. Michigan (8/24/07)
 1.000 at San Jose St. (9/25).....Hitting1.000 at San Jose St. (9/25/08)
 38 at San Jose St. (9/25)Assists ..68 at New Mexico St. (9/22/07)
 1 (6x)Aces5 vs. Idaho (9/14/07)
 1 vs. Wyoming (9/5)Block Solos ..2 at New Mexico St. (11/17/07)
 3 at San Jose St. (9/25).....Block Assists5 (2x)
 3 at San Jose St. (9/25)Blocks ..6 vs. New Mexico St. (10/26/07)
 10 at San Jose St. (9/25)Digs ..17 at New Mexico St. (11/17/07)

MATCH-BY-MATCH STATISTICS

Date	Opponent	sp	attack				set			serve				recept			dig	blocking				bhe	points	team hit%	score
			k	e	ta	pct	a	ta	pct	sa	se	ta	pct	re	ta	pct		bs	ba	be	total				
Aug 29, 2008	PENN STATE	3	0	0	0	.000	5	12	.417	0	0	5	1.000	0	0	.000	0	0	0	0	0.0	0	-	.156	0-3
Aug 30, 2007	OHIO	2	0	0	0	.000	1	3	.333	0	0	4	1.000	0	0	.000	2	0	1	0	1.0	0	-	.456	3-0
Aug 31, 2008	UCLA	4	0	0	0	.000	5	16	.312	0	0	6	1.000	0	0	.000	0	0	0	0	0.0	0	-	.229	1-3
Sep 04, 2008	MINNESOTA	4	0	0	1	1.000	3	7	.429	0	1	10	.900	0	1	1.000	2	0	0	0	0.0	0	-	.225	3-2
Sep 05, 2008	WYOMING	2	1	0	2	.500	12	32	.375	0	0	5	1.000	0	0	.000	3	1	1	0	2.0	0	-	.343	3-0
Sep 07, 2008	CINCINNATI	2	0	0	0	.000	1	3	.333	1	0	6	1.000	0	0	.000	3	0	0	0	0.0	0	-	.385	3-0
Sep 11, 2008	ST. MARY'S	3	0	0	0	.000	9	15	.600	1	0	6	1.000	0	0	.000	2	0	0	0	0.0	0	-	.366	3-0
Sep 12, 2008	PACIFIC	2	0	0	0	.000	2	3	.667	0	0	8	1.000	0	0	.000	4	0	0	0	0.0	0	-	.316	3-0
Sep 13, 2008	WASHINGTON	4	0	0	0	.000	0	4	.000	0	1	10	.900	0	0	.000	4	0	0	0	0.0	0	-	.260	3-2
Sep 19, 2008	IDAHO	4	0	0	0	.000	5	12	.417	1	2	10	.800	0	0	.000	5	0	1	0	1.0	0	-	.325	3-1
Sep 20, 2008	BOISE STATE	2	0	0	0	.000	3	9	.333	0	1	2	.500	0	0	.000	1	0	0	0	0.0	0	-	.277	3-0
Sep 25, 2008	at Louisiana Tech	2	0	0	0	.000	10	13	.769	0	1	3	.667	0	0	.000	2	0	0	0	0.0	1	-	.317	3-0
Sep 27, 2008	at New Mexico State	3	0	0	0	.000	1	2	.500	0	0	9	1.000	0	0	.000	0	0	0	0	0.0	1	-	.280	3-0
Sep 29, 2008	at San Jose State	3	3	0	3	1.000	38	80	.475	1	0	18	1.000	0	0	.000	10	0	3	0	3.0	2	-	.317	3-0
Oct 10, 2008	LOUISIANA TECH	2	0	0	0	.000	5	11	.455	0	0	6	1.000	0	0	.000	2	0	0	0	0.0	0	-	.414	3-0
Oct 12, 2008	NEW MEXICO STATE	2	0	0	0	.000	1	8	.125	0	1	2	.500	0	0	.000	2	0	0	0	0.0	0	-	.023	0-3
Oct 16, 2008	at Utah State	3	0	0	0	.000	0	0	.000	0	0	4	1.000	0	0	.000	2	0	0	0	0.0	0	-	.337	3-0
Oct 18, 2008	at Nevada	2	0	1	1	-1.000	3	10	.300	1	0	5	1.000	0	0	.000	7	0	0	0	0.0	0	-	.276	3-0
Oct 24, 2008	SAN JOSE STATE	2	0	0	0	.000	2	4	.500	0	2	3	.333	0	0	.000	3	0	0	0	0.0	0	-	.298	3-0
Oct 26, 2008	FRESNO STATE	3	0	0	0	.000	1	1	1.000	1	0	7	1.000	0	0	.000	0	0	0	0	0.0	0	-	.454	3-1
Oct 31, 2008	NEVADA	2	0	0	0	.000	3	10	.300	0	0	4	1.000	0	0	.000	6	0	0	0	0.0	0	-	.359	3-0
Nov 01, 2008	UTAH STATE	2	0	0	0	.000	2	2	1.000	0	1	1	.000	0	0	.000	0	0	0	0	0.0	0	-	.458	3-0
Nov 06, 2008	at Boise State	3	0	0	0	.000	3	4	.750	1	0	7	1.000	0	0	.000	1	0	0	0	0.0	0	-	.352	3-0
Nov 08, 2008	at Idaho	3	0	0	1	1.000	0	1	.000	0	0	6	1.000	0	0	.000	8	0	0	0	0.0	0	-	.220	3-0
Nov 10, 2008	at Fresno State	2	0	0	0	.000	4	5	.800	0	0	3	1.000	0	0	.000	2	0	0	0	0.0	1	-	.405	3-0
		66	4	1	8	.375	119	267	.446	7	10	150	.933	0	1	1.000	71	1	6	0	7.0	5	-		

Sets played: 66
 Kills per set: 0.06
 Assists per set: 1.80

Service aces per set: 0.11
 Digs per set: 1.08
 Blocks per set: 0.11

CAREER STATISTICS

Season	sp-mp	k	k/s	e	ta	pct	a	a/s	sa	sa/s	se
2007	114-33	31	0.27	17	98	.143	1454	12.75	40	0.35	31
2008	66-25	4	0.06	1	8	.375	119	1.80	7	0.11	10
TOTAL	180-58	35	0.19	18	106	.160	1573	8.74	47	0.26	41

Season	dig	d/s	re	bs	ba	tb	b/s	be	bhe
2007	259	2.27	1	4	48	52	0.46	8	36
2008	71	1.08	0	1	6	7	0.11	0	5
TOTAL	330	1.83	1	5	54	59	0.33	8	41



11 ♦ DANI MAFUA

5-10 ♦ SOPHOMORE ♦ SETTER

KAPOLEI, O'AHU (MID-PACIFIC INSTITUTE)

Started 24 matches at setter thus far...had 43 assists with nine digs vs. Nevada (Oct. 31)...posted 50 assists and six digs vs. Fresno State (Oct. 26)...had 45 assists and 12 digs vs. San Jose State (Oct. 24)...had 41 assists and nine digs at New Mexico State (Sept. 27)...had 55 assists and eight digs vs. Idaho (Sept. 19)...posted 63 assists and seven digs vs. Washington (Sept. 13)...had 29 assists and 12 digs vs. St. Mary's (Sept. 11)...posted 34 assists, three kills and six digs vs. Cincinnati (Sept. 7)...had 51 assists and 11 digs vs. Minnesota (Sept. 4)...had 52 assists and 11 digs vs. UCLA (Aug. 31)...posted 29 assists, three blocks and four digs vs. Ohio (Aug. 30)...played in 29 matches in 2007...redshirted the 2006 season.

SEASON & CAREER HIGHS

3 vs. Cincinnati (9/7)Kills3 vs. Cincinnati (9/7/08)
 1,000 (2x).....Hitting.....1,000 (8x)
 63 vs. Washington (9/13).....Assists ..63 vs. Washington (9/13/08)
 3 at Fresno St. (11/10)Aces3 at Fresno St. (11/10/08)
 1 vs. Boise St. (9/20)Block Solos.....1 vs. Boise St. (9/20/08)
 3 vs. Ohio (8/30)Block Assists3 vs. Ohio (8/30/08)
 3 vs. Ohio (8/30)Blocks3 vs. Ohio (8/30/08)
 12 vs. St. Mary's (9/11)Digs12 vs. St. Mary's (9/11/08)

MATCH-BY-MATCH STATISTICS

Date	Opponent	sp	attack			set			serve				recept			blocking				team					
			k	e	ta	pct	a	ta	pct	sa	se	ta	pct	re	ta	pct	dig	bs	ba	be	total	bhe	points	hit%	score
Aug 29, 2008	PENN STATE	3	1	0	2	.500	24	73	.329	0	1	8	.875	0	0	.000	4	0	0	0	0.0	1	-	.156	0-3
Aug 30, 2007	OHIO	3	2	0	3	.667	29	53	.547	0	3	12	.750	0	0	.000	4	0	3	0	3.0	0	-	.456	3-0
Aug 31, 2008	UCLA	4	2	0	3	.667	52	125	.416	0	0	15	1.000	0	0	.000	11	0	1	1	1.0	1	-	.229	1-3
Sep 04, 2008	MINNESOTA	5	2	0	6	.333	51	129	.395	0	2	25	.920	0	0	.000	11	0	0	1	0.0	0	-	.225	3-2
Sep 05, 2008	WYOMING	2	1	0	3	.333	16	38	.421	1	1	11	.909	0	0	.000	8	0	0	0	0.0	0	-	.343	3-0
Sep 07, 2008	CINCINNATI	3	3	0	3	1.000	34	73	.466	1	1	18	.944	0	0	.000	6	0	0	0	0.0	0	-	.385	3-0
Sep 11, 2008	ST. MARY'S	3	1	0	1	1.000	29	67	.433	0	0	10	1.000	0	0	.000	12	0	0	0	0.0	0	-	.366	3-0
Sep 12, 2008	PACIFIC	3	2	1	4	.250	40	93	.430	1	2	15	.867	0	1	1.000	7	0	1	1	1.0	0	-	.316	3-0
Sep 13, 2008	WASHINGTON	5	1	0	2	.500	63	142	.444	0	0	16	1.000	0	0	.000	7	0	0	0	0.0	0	-	.260	3-2
Sep 19, 2008	IDAHO	4	2	1	6	.167	55	118	.466	1	1	18	.944	0	0	.000	8	0	0	0	0.0	0	-	.325	3-1
Sep 20, 2008	BOISE STATE	3	1	0	2	.500	31	78	.397	0	0	9	1.000	0	0	.000	2	1	1	0	2.0	0	-	.277	3-0
Sep 25, 2008	at Louisiana Tech	3	0	0	0	.000	30	31	.968	1	1	10	.900	0	0	.000	2	0	2	0	2.0	1	-	.317	3-0
Sep 27, 2008	at New Mexico State	3	2	0	4	.500	41	46	.891	1	0	10	1.000	0	0	.000	9	0	0	0	0.0	0	-	.280	3-0
Oct 10, 2008	LOUISIANA TECH	3	1	0	2	.500	29	47	.617	2	3	16	.812	0	0	.000	7	0	1	0	1.0	0	-	.414	3-0
Oct 12, 2008	NEW MEXICO STATE	3	0	2	2	-1.000	26	97	.268	0	0	16	1.000	0	0	.000	9	0	1	1	1.0	0	-	.023	0-3
Oct 16, 2008	at Utah State	3	2	0	3	.667	37	76	.487	2	0	14	1.000	0	0	.000	5	1	0	1	1.0	0	-	.337	3-0
Oct 18, 2008	at Nevada	3	2	1	4	.250	31	77	.403	0	0	9	1.000	0	0	.000	2	0	1	0	1.0	2	-	.276	3-0
Oct 24, 2008	SAN JOSE STATE	3	1	1	4	.000	45	93	.484	1	1	16	.938	0	0	.000	12	0	0	0	0.0	0	-	.298	3-0
Oct 26, 2008	FRESNO STATE	4	2	0	5	.400	50	91	.549	1	0	7	1.000	0	0	.000	6	0	2	0	2.0	0	-	.454	3-1
Oct 31, 2008	NEVADA	3	1	0	3	.333	43	81	.531	0	2	14	.857	0	0	.000	9	0	1	0	1.0	0	-	.359	3-0
Nov 01, 2008	UTAH STATE	3	2	0	3	.667	38	65	.585	1	1	9	.889	0	0	.000	4	0	1	0	1.0	0	-	.458	3-0
Nov 06, 2008	at Boise State	3	2	0	2	1.000	38	41	.927	1	0	7	1.000	0	0	.000	3	0	2	2	2.0	0	-	.352	3-0
Nov 08, 2008	at Idaho	3	3	0	6	.500	37	97	.381	0	1	13	.923	0	0	.000	4	0	2	0	2.0	0	-	.220	3-0
Nov 10, 2008	at Fresno State	3	1	0	3	.333	30	33	.909	3	0	17	1.000	0	0	.000	3	0	1	0	1.0	0	-	.405	3-0
Totals		78	37	6	76	.408	899	1864	.482	17	20	324	.938	0	1	1.000	155	2	20	7	22.0	5	-		

Sets played: 78
 Kills per set: 0.47
 Assists per set: 11.53

Service aces per set: 0.22
 Digs per set: 1.99
 Blocks per set: 0.28

CAREER STATISTICS

Season	sp-mp	k	k/s	e	ta	pct	a	a/s	sa	sa/s	se
2006	0-0	0	0.00	0	0	.000	0	0.00	0	0.00	0
2007	53-29	12	0.23	3	26	.346	151	2.85	0	0.00	4
2008	78-24	37	0.47	6	76	.408	899	11.53	17	0.22	20
TOTAL	131-53	49	0.37	9	102	.392	1050	8.02	17	0.13	24

Season	dig	d/s	re	bs	ba	tb	b/s	be	bhe
2006	0	0.00	0	0	0	0	0.00	0	0
2007	23	0.43	0	0	8	8	0.15	3	4
2008	155	1.99	0	2	20	22	0.28	7	5
TOTAL	178	1.36	0	2	28	30	0.23	10	9



13 ♦ ANELI CUBI-OTINERU

5-11 ♦ JUNIOR ♦ OUTSIDE HITTER

HALE'IWA, O'AHU (SOUTHERN IDAHO)

Started 23 matches as an outside hitter...hit .467 with nine kills at Boise State (Nov. 6)...had 12 kills and 10 digs while hitting .429 vs. Nevada (Oct. 31)...hit .385 with 13 kills and eight digs at Nevada (Oct. 18)...had 10 kills and 12 digs at New Mexico State (Sept. 27)...posted nine kills and five aces vs. Boise State (Sept. 20)...had 17 digs vs. Washington (Sept. 13)...named to The Honolulu Advertiser Challenge all-tournament team...hit .462 with eight kills vs. Wyoming (Sept. 5)...had 13 kills and 17 digs vs. Minnesota (Sept. 4)...named to the Hawaiian Airlines Wahine Classic all-tournament team...hit .571 with nine kills vs. Ohio (Aug. 30)...named first team all-WAC in 2007...academic all-WAC...transferred from the College of Southern Idaho, where she earned junior college All-America honors.

SEASON & CAREER HIGHS

13 (2x)	Kills	22 vs. Wichita St. (9/7/07)
.571 vs. Ohio (8/30)	Hitting571 vs. Ohio (8/30/08)
2 vs. Idaho (9/19)	Assists	3 at New Mexico St. (11/17/07)
5 vs. Boise St. (9/20)	Aces	5 vs. Boise St. (9/20/08)
1 (2x)	Block Solos	1 (9x)
4 at Idaho (11/8)	Block Assists	4 (4x)
4 at Idaho (11/8)	Blocks	4 (4x)
17 (2x)	Digs	23 at New Mexico St. (9/22/07)

MATCH-BY-MATCH STATISTICS

Date	Opponent	sp	attack				set			serve				recept			dig	blocking				bhe	points	hit%	team score
			k	e	ta	pct	a	ta	pct	sa	se	ta	pct	re	ta	pct		bs	ba	be	total				
Aug 29, 2008	PENN STATE	3	9	2	20	.350	1	3	.333	0	3	8	.625	0	23	1.000	3	0	1	0	1.0	0	-	.156	0-3
Aug 30, 2007	OHIO	3	9	1	14	.571	1	4	.250	0	1	12	.917	0	12	1.000	2	0	2	0	2.0	0	-	.456	3-0
Aug 31, 2008	UCLA	4	12	5	25	.280	1	5	.200	0	0	15	1.000	1	25	.960	6	1	1	0	2.0	0	-	.229	1-3
Sep 04, 2008	MINNESOTA	5	13	5	37	.216	1	6	.167	2	2	19	.895	0	22	1.000	17	0	1	0	1.0	0	-	.225	3-2
Sep 05, 2008	WYOMING	2	8	2	13	.462	1	2	.500	0	1	3	.667	0	7	1.000	2	0	1	0	1.0	0	-	.343	3-0
Sep 07, 2008	CINCINNATI	3	7	2	19	.263	1	5	.200	1	2	10	.800	0	15	1.000	5	0	2	0	2.0	0	-	.385	3-0
Sep 11, 2008	ST. MARY'S	3	6	3	17	.176	0	4	.000	1	1	12	.917	0	5	1.000	9	0	2	1	2.0	0	-	.366	3-0
Sep 12, 2008	PACIFIC	2	3	0	14	.214	1	4	.250	2	1	9	.889	0	9	1.000	4	0	1	0	1.0	0	-	.316	3-0
Sep 13, 2008	WASHINGTON	5	3	4	12	-.083	1	4	.250	0	3	17	.824	0	26	1.000	17	0	1	0	1.0	0	-	.260	3-2
Sep 19, 2008	IDAHO	3	8	3	19	.263	2	5	.400	2	2	11	.818	0	17	1.000	6	0	1	0	1.0	0	-	.325	3-1
Sep 20, 2008	BOISE STATE	3	9	1	24	.333	0	1	.000	5	2	20	.900	1	8	.875	4	0	1	0	1.0	0	-	.277	3-0
Sep 25, 2008	at Louisiana Tech	2	5	1	10	.400	0	7	.000	0	2	8	.750	1	9	.889	4	0	3	0	3.0	0	-	.317	3-0
Sep 27, 2008	at New Mexico State	3	10	6	23	.174	0	12	.000	0	1	9	.889	0	15	1.000	12	1	0	0	1.0	0	-	.280	3-0
Sep 29, 2008	at San Jose State	2	0	0	0	.000	0	1	.000	0	0	4	1.000	0	2	1.000	0	0	0	0	0.0	1	-	.317	3-0
Oct 10, 2008	LOUISIANA TECH	3	7	2	12	.417	1	3	.333	1	3	11	.727	1	13	.923	4	0	0	0	0.0	0	-	.414	3-0
Oct 12, 2008	NEW MEXICO STATE	3	5	8	29	-.103	0	2	.000	3	2	13	.846	0	17	1.000	7	0	2	0	2.0	0	-	.023	0-3
Oct 16, 2008	at Utah State	3	5	1	11	.364	1	4	.250	1	2	15	.867	0	13	1.000	6	0	2	0	2.0	0	-	.337	3-0
Oct 18, 2008	at Nevada	3	13	3	26	.385	0	1	.000	0	2	10	.800	0	10	1.000	8	0	1	0	1.0	0	-	.276	3-0
Oct 24, 2008	SAN JOSE STATE	3	8	3	17	.294	1	2	.500	1	1	16	.938	0	17	1.000	8	0	2	1	2.0	0	-	.298	3-0
Oct 26, 2008	FRESNO STATE	4	7	0	17	.412	0	0	.000	2	2	15	.867	4	22	.818	9	0	3	0	3.0	0	-	.454	3-1
Oct 31, 2008	NEVADA	3	12	3	21	.429	2	5	.400	1	2	12	.833	0	17	1.000	10	0	0	0	0.0	0	-	.359	3-0
Nov 01, 2008	UTAH STATE	2	3	2	9	.111	0	2	.000	0	2	6	.667	0	5	1.000	2	0	0	0	0.0	0	-	.458	3-0
Nov 06, 2008	at Boise State	3	9	2	15	.467	1	9	.111	1	2	8	.750	1	12	.917	4	0	0	0	0.0	0	-	.352	3-0
Nov 08, 2008	at Idaho	3	8	3	20	.250	0	5	.000	1	0	9	1.000	0	18	1.000	11	0	4	0	4.0	1	-	.220	3-0
Nov 10, 2008	at Fresno State	3	3	0	6	.500	1	10	.100	1	2	14	.857	0	11	1.000	9	0	1	0	1.0	0	-	.405	3-0
		76	182	62	430	.279	17	106	.160	25	41	286	.857	9	350	.974	169	2	32	2	34.0	2	-		

Sets played: 76
Kills per set: 2.39
Assists per set: 0.22

Service aces per set: 0.33
Digs per set: 2.22
Blocks per set: 0.45

CAREER STATISTICS

Season	sp-mp	k	k/s	e	ta	pct	a	a/s	sa	sa/s	se
2007	115-33	424	3.69	195	1087	.211	22	0.19	30	0.26	33
2008	76-25	182	2.39	62	430	.279	17	0.22	25	0.33	41
TOTAL	191-58	606	3.17	257	1517	.230	39	0.20	55	0.29	74

Season	dig	d/s	re	bs	ba	tb	b/s	be	bhe
2007	321	2.79	10	7	52	59	0.51	6	4
2008	169	2.22	9	2	32	34	0.45	2	2
TOTAL	490	2.57	19	9	84	93	0.49	8	6



14 ♦ AMANDA SIMMONS

6-2 ♦ SOPHOMORE ♦ MIDDLE HITTER

DES PLAINS, IL (ELK GROVE HS)

Started one match at middle hitter, playing in eight total matches...had two kills and a block vs. St. Mary's (Sept. 11)...had two kills and three blocks vs. Wyoming (Sept. 5)...played in 14 matches as a middle hitter in 2007.

SEASON & CAREER HIGHS

2 (2x).....Kills5 vs. E. Washington (9/6/07)
 1.000 vs. St. Mary's (9/11)Hitting .667 vs. E. Washington (9/6/07)
 3 vs. Wyoming (9/5)Assists3 vs. Wyoming (9/5/08)
 NA.....AcesNA
 NABlock SolosNA
 3 vs. Wyoming (9/5)Block Assists.....3 vs. Wyoming (9/5/08)
 3 vs. Wyoming (9/5)Blocks3 vs. Wyoming (9/5/08)
 1 vs. UCLA (8/31).....Digs2 vs. Oregon St. (8/26/07)

MATCH-BY-MATCH STATISTICS

Date	Opponent	sp	attack				set			serve				recept			dig	blocking				team		
			k	e	ta	pct	a	ta	pct	sa	se	ta	pct	re	ta	pct		bs	ba	be	total	bhe	points	hit%
Aug 29, 2008	PENN STATE	1	0	0	3	.000	0	0	.000	0	0	0	.000	0	0	.000	0	0	0	0.0	0	-	.156	0-3
Aug 31, 2008	UCLA	2	0	0	2	.000	0	0	.000	0	0	0	.000	0	0	.000	1	0	0	0.0	0	-	.229	1-3
Sep 05, 2008	WYOMING	2	2	1	7	.143	3	6	.500	0	0	0	.000	0	0	.000	0	0	3	3.0	0	-	.343	3-0
Sep 11, 2008	ST. MARY'S	1	2	0	2	1.000	0	0	.000	0	0	0	.000	0	0	.000	0	0	1	1.0	0	-	.366	3-0
Sep 20, 2008	BOISE STATE	1	0	0	0	.000	0	0	.000	0	0	0	.000	0	0	.000	0	0	0	0.0	0	-	.277	3-0
Sep 25, 2008	at Louisiana Tech	1	1	1	5	.000	0	0	.000	0	0	0	.000	0	0	.000	0	0	2	2.0	0	-	.317	3-0
Sep 29, 2008	at San Jose State	1	0	0	0	.000	0	2	.000	0	0	0	.000	0	0	.000	0	0	0	0.0	0	-	.317	3-0
Oct 24, 2008	SAN JOSE STATE	1	0	0	1	.000	0	0	.000	0	0	0	.000	0	0	.000	0	0	0	0.0	0	-	.298	3-0
Totals		10	5	2	20	.150	3	8	.375	0	0	0	.000	0	0	.000	1	0	6	6.0	0	-		

Sets played: 10
 Kills per set: 0.50
 Assists per set: 0.30

Digs per set: 0.10
 Blocks per set: 0.60

CAREER STATISTICS

Season	sp-mp	k	k/s	e	ta	pct	a	a/s	sa	sa/s	se
2007	16-14	12	0.75	14	40	-.050	0	0.00	2	0.12	2
2008	10-8	5	0.50	2	20	.150	3	0.30	0	0.00	0
TOTAL	26-22	17	0.65	16	60	.017	3	0.12	2	0.08	2

Season	dig	d/s	re	bs	ba	tb	b/s	be	bhe
2007	3	0.19	1	0	5	5	0.31	0	0
2008	1	0.10	0	0	6	6	0.60	0	0
TOTAL	4	0.15	1	0	11	11	0.42	0	0



16 ♦ CATHERINE FOWLER

6-2 ♦ JUNIOR ♦ MIDDLE HITTER

CONWAY, AR (ARKANSAS)

Played in 16 matches as a middle hitter, starting one...went a perfect 3-for-3 on attack attempts in one set vs. Utah State (Nov. 1)...had four blocks in just one set at Utah State (Oct. 16)...hit .600 with three kills and a block vs. Minnesota (Sept. 4)...had five blocks vs. Ohio (Aug. 30)...had two kills vs. Penn State (Aug. 29)...transferred from Arkansas, where she was a two-year starter.

SEASON & CAREER HIGHS

3 (2x).....Kills	3 (2x)
1.000 vs. Utah St. (11/1).....Hitting ..	1.000 vs. Utah St. (11/1/08)
NA	Assists
NA.....	Aces
NA	Block Solos
5 vs. Ohio (8/30)	Block Assists
5 vs. Ohio (8/30)	Blocks
2 vs. Ohio (8/30)	Digs

MATCH-BY-MATCH STATISTICS

Date	Opponent	sp	attack				set			serve				recept			dig	blocking				bhe	points	team	
			k	e	ta	pct	a	ta	pct	sa	se	ta	pct	re	ta	pct		bs	ba	be	total			hit%	score
Aug 29, 2008	PENN STATE	2	2	1	4	.250	0	1	.000	0	0	0	.000	0	1	1.000	1	0	0	0	0.0	0	-	.156	0-3
Aug 30, 2007	OHIO	1	0	0	2	.000	0	1	.000	0	0	0	.000	0	1	1.000	2	0	5	0	5.0	0	-	.456	3-0
Sep 04, 2008	MINNESOTA	3	3	0	5	.600	0	0	.000	0	0	0	.000	0	0	.000	1	0	1	1	1.0	0	-	.225	3-2
Sep 05, 2008	WYOMING	1	1	0	5	.200	0	0	.000	0	0	0	.000	0	0	.000	0	0	0	0	0.0	0	-	.343	3-0
Sep 11, 2008	ST. MARY'S	1	0	0	0	.000	0	3	.000	0	0	0	.000	0	0	.000	0	0	0	0	0.0	0	-	.366	3-0
Sep 13, 2008	WASHINGTON	1	0	1	1	-1.000	0	0	.000	0	0	0	.000	0	0	.000	0	0	0	0	0.0	0	-	.260	3-2
Sep 19, 2008	IDAHO	1	0	0	0	.000	0	0	.000	0	0	0	.000	0	0	.000	0	0	1	0	1.0	0	-	.325	3-1
Sep 20, 2008	BOISE STATE	1	1	2	3	-.333	0	0	.000	0	0	0	.000	0	0	.000	0	0	2	1	2.0	0	-	.277	3-0
Oct 10, 2008	LOUISIANA TECH	1	2	0	2	1.000	0	1	.000	0	0	0	.000	0	0	.000	0	0	1	0	1.0	0	-	.414	3-0
Oct 16, 2008	at Utah State	1	0	0	3	.000	0	0	.000	0	0	0	.000	0	0	.000	1	0	4	0	4.0	0	-	.337	3-0
Oct 18, 2008	at Nevada	1	0	0	0	.000	0	0	.000	0	0	0	.000	0	0	.000	0	0	1	0	1.0	0	-	.276	3-0
Oct 24, 2008	SAN JOSE STATE	1	1	2	4	-.250	1	1	1.000	0	0	0	.000	0	0	.000	0	0	1	0	1.0	0	-	.298	3-0
Oct 31, 2008	NEVADA	1	0	0	1	.000	0	0	.000	0	0	0	.000	0	0	.000	0	0	0	1	0.0	0	-	.359	3-0
Nov 01, 2008	UTAH STATE	1	3	0	3	1.000	0	0	.000	0	0	0	.000	0	0	.000	0	0	0	0	0.0	0	-	.458	3-0
Nov 06, 2008	at Boise State	1	0	0	0	.000	0	0	.000	0	0	0	.000	0	0	.000	0	0	0	0	0.0	0	-	.352	3-0
Nov 10, 2008	at Fresno State	2	1	2	5	-.200	0	0	.000	0	0	0	.000	0	0	.000	0	0	0	0	0.0	0	-	.405	3-0
Totals		20	14	8	38	.158	1	7	.143	0	0	0	.000	0	2	1.000	5	0	16	3	16.0	0	-		

Sets played: 20
 Kills per set: 0.70
 Assists per set: 0.05

Digs per set: 0.25
 Blocks per set: 0.80

CAREER STATISTICS

Season	sp-mp	k	k/s	e	ta	pct	a	a/s	sa	sa/s	se
2008	20-16	14	0.70	8	38	.158	1	0.05	0	0.00	0
TOTAL	20-16	14	0.70	8	38	.158	1	0.05	0	0.00	0

Season	dig	d/s	re	bs	ba	tb	b/s	be	bhe
2008	5	0.25	0	0	16	16	0.80	3	0
TOTAL	5	0.25	0	0	16	16	0.80	3	0



18 ♦ JAYME LEE

5-2 ♦ JUNIOR ♦ LIBERO

'AIEA, O'AHU (HAWAI'I BAPTIST ACADEMY)

Played in 10 matches as a defensive specialist...had a rare kill vs. Nevada (Oct. 31)...had seven digs and two assists vs. Wyoming (Sept. 5)...had three digs vs. Ohio (Aug. 30)...played in 32 matches as a defensive specialist in 2007...played in 35 matches, starting the last 34 at libero in 2006...earned WAC all-Freshman team honors...redshirted the 2005 season...two-time academic all-WAC.

SEASON & CAREER HIGHS

1 vs. Nevada (10/31)Kills2 vs. E. Washington (9/6/07)
 1.000 vs. Nevada (10/31).....Hitting.....1.000 (6x)
 2 vs. Wyoming (9/5)Assists..6 vs. New Mexico St. (11/12/06)
 NA.....Aces4 vs. Oregon (12/1/06)
 NABlock SolosNA
 NABlock AssistsNA
 NABlocksNA
 7 vs. Wyoming (9/5)Digs.....7 vs. Wyoming (9/5/08)

MATCH-BY-MATCH STATISTICS

Date	Opponent	sp	attack			set			serve				recept			dig	blocking				bhe	points	hit%	team score		
			k	e	ta	pct	a	ta	pct	sa	se	ta	pct	re	ta		pct	bs	ba	be					total	
Aug 29, 2008	PENN STATE	1	0	0	0	.000	0	0	.000	0	0	2	1.000	0	1	1.000	0	0	0	0	0	0	0	-	.156	0-3
Aug 30, 2007	OHIO	2	0	0	0	.000	0	0	.000	0	0	7	1.000	0	0	.000	3	0	0	0	0	0	0	-	.456	3-0
Aug 31, 2008	UCLA	1	0	0	0	.000	1	1	1.000	0	0	1	1.000	0	0	.000	0	0	0	0	0	0	0	-	.229	1-3
Sep 05, 2008	WYOMING	3	0	0	0	.000	2	7	.286	0	0	11	1.000	1	10	.900	7	0	0	0	0	0	0	-	.343	3-0
Sep 19, 2008	IDAHO	1	0	0	0	.000	0	0	.000	0	0	0	.000	0	1	1.000	0	0	0	0	0	0	0	-	.325	3-1
Sep 20, 2008	BOISE STATE	1	0	0	0	.000	0	0	.000	0	0	0	.000	0	1	1.000	0	0	0	0	0	0	0	-	.277	3-0
Oct 10, 2008	LOUISIANA TECH	1	0	0	0	.000	0	0	.000	0	1	4	.750	0	1	1.000	0	0	0	0	0	0	0	-	.414	3-0
Oct 26, 2008	FRESNO STATE	2	0	0	0	.000	0	0	.000	0	0	3	1.000	0	0	.000	1	0	0	0	0	0	0	-	.454	3-1
Oct 31, 2008	NEVADA	2	1	0	1	1.000	0	0	.000	0	0	4	1.000	0	0	.000	1	0	0	0	0	0	0	-	.359	3-0
Nov 01, 2008	UTAH STATE	1	0	0	0	.000	0	1	.000	0	0	1	1.000	0	1	1.000	1	0	0	0	0	0	0	-	.458	3-0
Totals		15	1	0	1	1.000	3	9	.333	0	1	33	.970	1	15	.933	13	0	0	0	0	0	0	-	-	

Sets played: 15
 Kills per set: 0.07
 Assists per set: 0.20

Digs per set: 0.87

CAREER STATISTICS

Season	sp-mp	k	k/s	e	ta	pct	a	a/s	sa	sa/s	se
2006	123-35	1	0.01	2	4	-.250	63	0.51	24	0.20	19
2007	99-32	5	0.05	0	5	1.000	17	0.17	11	0.11	11
2008	15-10	1	0.07	0	1	1.000	3	0.20	0	0.00	1
TOTAL	237-77	7	0.03	2	10	.500	83	0.35	35	0.15	31

Season	dig	d/s	re	bs	ba	tb	b/s	be	bhe
2006	467	3.80	36	0	0	0	0.00	0	0
2007	113	1.14	11	0	0	0	0.00	0	0
2008	13	0.87	1	0	0	0	0.00	0	0
TOTAL	593	2.50	48	0	0	0	0.00	0	0