



# Preliminary Results

Fargo-Moorhead Metro Feasibility Study  
Initial Screening Results, October 2009  
Screened Alternatives Ranked by Net Benefits

Alternative	First Cost *	Avg Annual Net Benefits *	Residual Damages *	B/C Ratio	Downstream Impacts **
MN Short Diversion 25K	962	11.0	14.3	1.22	2.4
MN Short Diversion 35K	1,092	9.4	9.3	1.17	2.5
Levee 1% chance (100-year)	902	7.7	20.9	1.17	?
MN Long Diversion 25K	1,055	5.6	15.0	1.10	?
MN Short Diversion 45K	1,264	2.5	7.4	1.04	3.0
MN Long Diversion 35K	1,260	0.3	9.8	1.00	?
ND East Diversion 35K	1,337	-3.1	9.2	0.95	4.1
ND West Diversion 35K	1,363	-4.4	9.2	0.94	?
Levee 2% chance (50-year)	840	-5.3	37.1	0.88	?
ND West Diversion 45K	1,439	-6.7	7.6	0.91	?
MN Long Diversion 45K	1,459	-8.3	8.2	0.89	?

\* In millions of dollars

\*\* Inches during 1% Chance flood (100-year)

Note: Expected average annual damages without a project are \$73.7 million.



# Preliminary Results

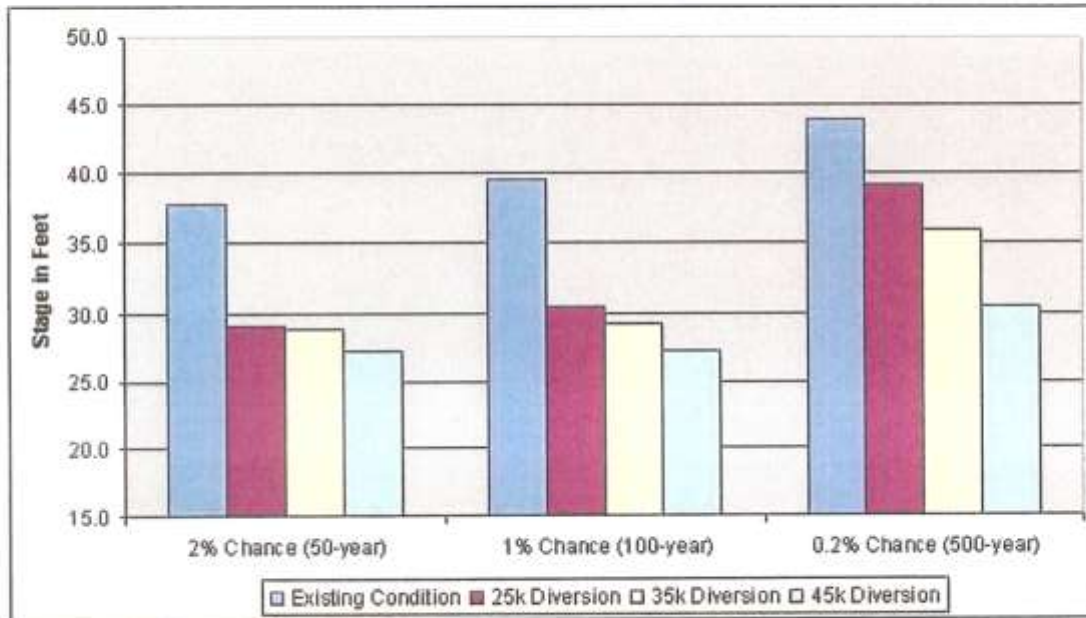
## Effects of Diversions

	STAGE at the FARGO GAGE		
	2% Chance (50-year)	1% Chance (100-year)	0.2% Chance (500-year)
Existing Condition	37.8	39.5	43.9
25k Diversion	29.1	30.4	39.2
35k Diversion	28.8	29.2	35.9
45k Diversion	27.1	27.2	30.4

Stage	Impacts
27	Fargo Elm Street closed
30	Fargo 2nd Street Dike installed
31	Moorhead 1st Ave North closed
32	First homes in Moorhead threatened
35	First homes in Fargo threatened
40.8	2009 Flood Record Stage

# Preliminary Results

## Effects of Diversions



# Future Floodplain



ND 35K MN 35K

