

*Ramblings with Members*  
Stan Hess, Service Forester



During a site visit with Stan, Walt Petrick discovers hidden forest regeneration

**Board Meeting, December 16 in Emporium**

*Condensed minutes of Verda Weder Knowlton, Secretary*

The board decided to combine the savings account and the checking account into one account upon recommendation of Marie Petrick.

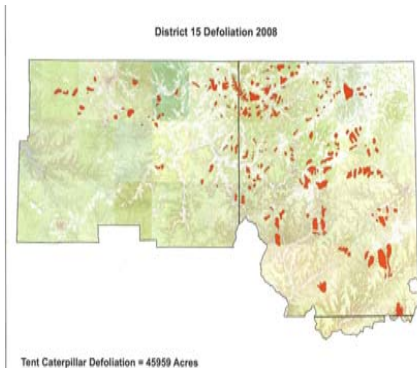
Other items of business: \* Donations to high school Ag programs was tabled for the next meeting. \* Buying seedlings in bulk for resale to members was discussed and the decision was made to just provide information to the membership about sources. \* Program planning for 2009.

**Forest Health Update**

Stan Hess, Service Forester

Potter and McKean Counties experienced over 45,000 acres of forest tent defoliation in 2008. Some of you were in the midst of it and experienced the defoliation and nuisance of caterpillar hoards. After extensive surveys of pupae, very few metamorphosed into moths.

We believe the population has collapsed in the defoliated areas. Despite this good news, new pockets could emerge. This defoliation map was derived from aerial surveillance by for-



ester Andy Sidelinger.

**What is the Forest Tent Caterpillar?**

Bureau of Forestry website.

Forest tent caterpillar (FTC), *Malacosoma disstria* is native to North America and is a defoliator of hardwood trees in Pennsylvania. Like other species of Lepidoptera, it undergoes a complete life cycle and has four life stages-egg, larva, pupa, and adult. This is a cyclic pest in Pennsylvania with populations occasionally reaching outbreak proportions. When populations are high FTC can cause complete defoliation of af-



FOREST TENT CATERPILLAR COCCOON



FOREST TENT CATERPILLAR ADULT

ected host species. Unlike the similar eastern tent caterpillar, FTC DOES NOT make a silk tent as its name suggests.

There are many similar looking caterpillar species including the eastern tent caterpillar, *Malacosoma americanum*, and the gypsy moth, *Lymantria dispar*. The eastern tent caterpillar can be identified by the presence of a "white stripe" in place of the "footprint-



FOREST TENT CATERPILLAR LARVA



EASTERN TENT CATERPILLAR



GYPSY MOTH

shaped" marks. Gypsy moth can be recognized by its' paired red and blue spots.

For more complete information visit the Bureau of Forestry website, Penn State Natural Resources, Tim Pierson or one of the Service Foresters.

**North Central Forest Landowners Association**

**President** - Larry Schultz (717)484-2239 **Advisor:** Tim Pierson, PhD, Penn State Extension (814)887- 5613

**Vice-Pres** - John Snyder (814)274-9559

**Secretary** - Verda Weder Knowlton (814)544-7353

**Treasurer** - Marie Petrick (814)544-8883

**Board**

Rick Smith - McKean Co.- (814)642-2250

David Lombardo -Cameron Co.-(814)735-1110

Ken Comstock-Potter Co. (814)544-7776

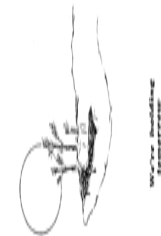
Linda Pontzer-Elk Co. (814)834-2090

**Service foresters:**  
Toby Herzing (814)486-3353, Elk & Cameron Counties  
Stan Hess, (814)274-3616, Potter & McKean Counties & Newsletter editor

**Webmaster:** Walt Petrick

\* The leaf is from the Basswood tree

North Central Forest Landowners Association  
P.O. Box 141  
Port Allegany, PA 16743



January 2009

What leaf is this? See \* last page



215 MEMBERS  
234,000+ ACRES

# North Central Forest Landowners Association

Cameron, Elk, McKean, & Potter Counties

## View From The Top Of The Tree

Larry Schultz

The idea that global warming is caused by carbon dioxide (CO<sub>2</sub>) produced by human activity is a fraud and a hoax. CO<sub>2</sub> makes up a tiny fraction of the earth's atmosphere, nitrogen is 78%, oxygen is 21%, and most of the remaining 1% is argon. CO<sub>2</sub> is 0.038 percent or 380 parts per million. Of that 0.038% which is CO<sub>2</sub>, 57% is caused by evaporation of ocean water, 38% is respiration which is produced by animals and decomposition of organic matter and less than 5% comes from all human activities. It is absurd to think that we could alter the climate by changing the amount we produce. The earth has a long history of changing climate, there was major warming in the Medieval Warm Period about 800-1300 AD. Then there was major cooling during the Little Ice Age which was around 1300-1850. Core samples taken from glaciers have been used to get an idea of temperature and CO<sub>2</sub> levels over a 400,000 year period. These do show a correlation that when temperature increases, CO<sub>2</sub> levels increase at a later date. This should surprise no one since 57% of CO<sub>2</sub> comes from evaporation of the oceans. The temperature of earth is influenced most by solar activity, during periods of increased sun spot activity the earth tends to warm, and reduced sun spot activity cools the earth. This year for the first time in 100 years there were months when no sun spots were observed, perhaps the concern should be global cooling. It appears we are going to spend huge sums of money on global warming which will accomplish nothing. With all the problems facing us at this time that money could be put to better uses.

So how will this effect forest landowners? One thing to consider is carbon credits. Industries that produce large amounts of CO<sub>2</sub> could buy carbon credits from those who do things to sequester carbon. This is truly a stupid idea. However, if someone is dumb enough to pay me to do something I was going to do anyway, I'll take their money provided there are not too many strings attached that would prevent me from practicing good forestry.

The terms of office for all NCFLA officers will expire at the end of this year. I have decided not to run for re-election. I have been president for eight years and I think it is time for someone else to lead this association. Nominating forms will be sent with the notice for the July picnic.

## 2009 Calendar

Sunday February 8  
Membership meeting Speaker on Carbon Credits and approval of new by-laws. Legion Port Allegany 1-5pm.

Saturday February 28—Central Region Forest Landowners Conference  
"Your Forest, An Energy Source for the Future": 9am to 4pm -School Forest Resources building, Penn State. Registration \$30—deadline of February 20. 814-355-4897

March 10 –Board meeting at Extension office in Smethport.

Sunday May 17– Woods walk at Potato Creek. More to come.

Saturday June 20—North Central Forest Landowners Workshop in Emporium. More to come.

Sat July 11—Annual picnic and meeting at Ken and Jane Cogan property.

August/September—Woods walk More to come.

Sunday October 4—Woodswalk at Ken Comstock's farm.

Sunday November 1—Annual Banquet at the Red Fern in St. Marys.

## Service Award Highlight of Annual Meeting

11/2/2008 in Coudersport

From Minutes, Verda Weder Knowlton, Secretary

The annual meeting was held at the American Legion with 62 in attendance. President Larry Schultz called the meeting to order.



Photo by Tim Pierson

Larry Schultz presented Jean Culver with an engraved wooden clock, at the annual meeting on November 2, 2008, thanking her for her many years of service to the NCFLA since the beginning of this organization in 1998. Jean thanked everyone and said she has enjoyed her many years as treasurer, but felt it was time to let somebody else take over.

Tim Pierson remembers the meeting in Port Allegany in 1998 during which a few people—including Jean Culver, Jane Cogan, Al McCullough, Stan Hess, Sandy Lyon and he agreed to try to put a landowner's association together. They had 5 separate meetings to write the bylaws. This Association is the largest in the state, with great leadership and outstanding programs for our landowners.

### Treasurer's Report

Marie Petrick reported that the beginning balance on April 1, 2008 was \$1,452.22. Deposits were \$3,204.00 and disbursements were in the amount of \$2,065.08, giving an ending balance of \$2,591.14.

### President's Report

Larry Schultz reported the following events have been held during the year:

- a general membership meeting on February 21, 2008 at the Courtyard Restaurant in Smethport on the subject of "Woody Biomass and Bioenergy";
- the Central Region Forest Landowners Conference at Penn State University on March 8<sup>th</sup>;
- a May 18<sup>th</sup> woods walk at Larry Schultz's property;

- a Property Tax Committee meeting with Senator Scarnati on June 5<sup>th</sup>;
- the July 12<sup>th</sup> annual picnic and membership meeting at Ken and Jane Cogan's;
- Larry and Tim co-chaired the program committee for the Pa. Forestry Association's annual meeting held in St. Mary's on September 12-13, during which Larry presented a brief history of the NCFLA; and
- a woods walk was held at Walt and Marie Petrick's on September 21<sup>st</sup>.

### Tax Committee

Jim Herzog, tax committee member, reported that each year they contact the county commissioners since they deal with property taxes. Property taxes are based on the assumption that landowners get income each year from forested property, which is not the case. Currently, Jim is pursuing a tax appeal in McKean County on this issue. If the appeal is successful, it will set a precedent. Landowners can also ask for the non-productive areas of their land, such as roads and power lines, to be assessed at a lower rate. However, many people do not apply for this reduction.

### Incorporation

Larry Schultz reported that on March 11, 2008, the bylaws committee ( Larry Schultz, Walt and Marie Petrick, Verda Knowlton) met with attorney Steve Minor to explore incorporating the NCFLA. The two main reasons are: to give protection to the personal assets of officers and board members in the event of a lawsuit; and a non-profit organization can receive tax deductible gifts. One-time costs are \$1,000 in attorney's fees.

The incorporation required a complete rewrite of our bylaws, mostly to conform to the non-profit corporate law. The bylaws committee re-wrote the bylaws and presented them to attorney Steve Minor for review. Overall, changes in our organization will be minor. One change is the election procedure. Nominating ballots will be made available at the July membership meeting and ballots will be sent out in September. The new slate of officers will be announced at the Annual Membership meeting in November. The terms of all present officers and directors will expire at the end of 2009.

When the corporate bylaws are finalized, we will schedule a special membership meeting in 2009 for approval by the members. We still have to complete federal and state tax forms to obtain tax exempt status which will require a meeting with a CPA.

### Program

Following the dinner, guest speaker Dr. Tim Pierson presented a very enjoyable and informative program "Utilizing Woody Biomass for Energy Independence in Austria and Smethport, PA".