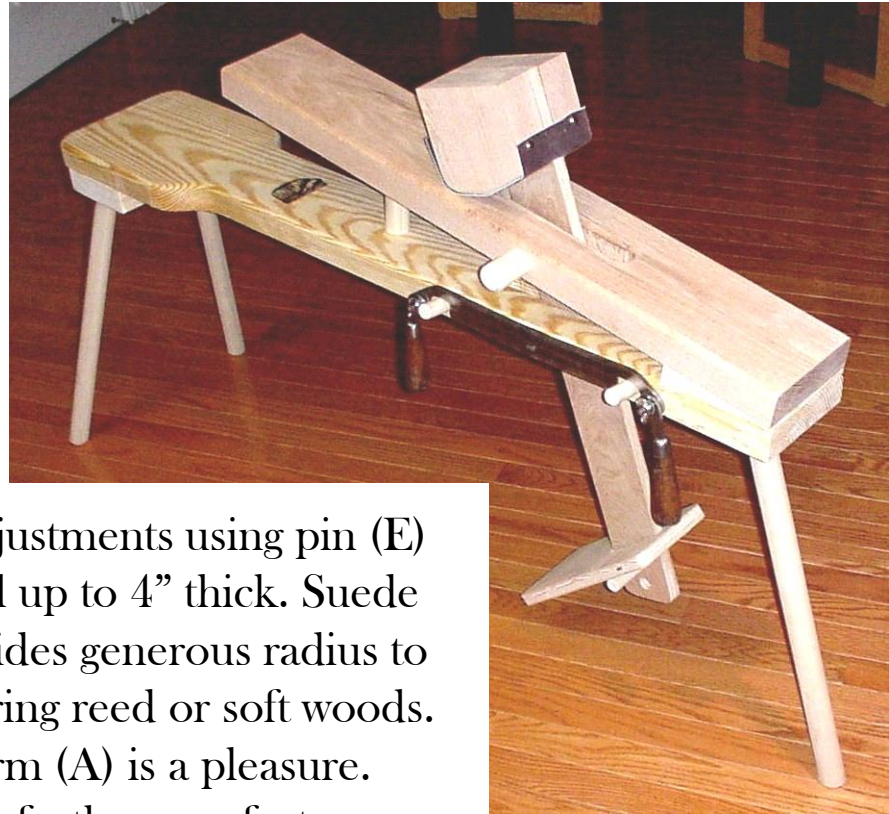
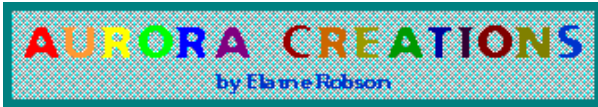


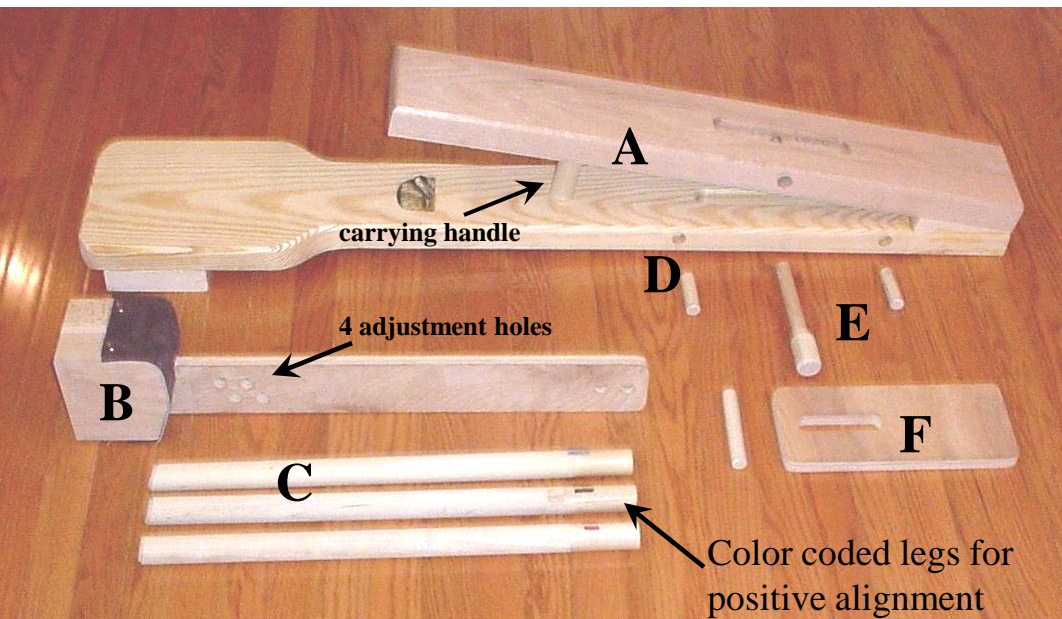
The Basket Maker's Friend

Proudly offered by:



This traditional well crafted shave horse mimics original Shaker style as developed by using the best of several designs.

The clamp head (B) has four adjustments using pin (E) to suit personal size and material up to 4" thick. Suede covered oak headstock (B) provides generous radius to assure positive grip without marring reed or soft woods. Shaving on wide 5.5" oak platform (A) is a pleasure. Adjustable foot pedal (F) assures further comfort.



Easy disassembly w/ built-in handle (A) encourages a "take anywhere" attitude.

Conveniently located draw knife support pins (D) are spaced to fit most drawknife lengths (8-10").

- MATERIALS:** (All Natural Finish)
- Kiln Dried Oak - Head Stock & Shave Board
 - Birch Cabinet Ply - Pivot & Foot Pedal
 - Yellow Pine - Seat Board
 - Poplar and Oak - Legs & Dowels

SIZE: 48"L x 9.5"W x 32"H **WT:** 27#

COST: \$275 + shipping

Sturdy 1.25" legs (C) fit snugly into precision bored holes while wax burnishing and color coding at leg interface ensures easy assembly.

305 Shadowmere Dr.
Greenville, SC 29669
Phone (864) 243-9384
enprobson@bellsouth.net
www.aurorabaskets.com

Rev 11-30-2011